

HIGHTONE
KARON SEAVIEW VILLAS & GARDEN

NEW PROJECT FROM PHUKET9

Private community of 11 ultra-premium villas with seaview.
Located in 1 kilometer from Karon - one of the most popular beach in Phuket.



Phuket9.com

> CONTENTS

About Project	2
The Map	3
Location	4
Master Plan	5
Interior	6
Villa Types	8
About Phuket9	41

ABOUT PROJECT

The **Hightone** villa community, featuring sea views, is located near one of Phuket's most popular beaches, Karon Beach. This prime location offers residents spectacular ocean vistas and easy access to one of the area's top attractions. Ideal for those seeking a tranquil yet connected lifestyle, Hightone provides a serene escape with the convenience of being close to vibrant beach activities, dining, and entertainment options.



11 ULTRA LUXURY VILLAS



DISTANCE TO THE BEACH 1 KM.



PANORAMIC SEAVIEW



FULL FURNITURE PACKAGE



LUXURY STANDARTS



HOTEL MANAGMENT



FULL SECURITY AREA



MODERN DESIGN



POOL VILLAS



CONSTRUCTION IN PROGRESS



THE MAP OF PHUKET9 PROJECTS

With a well-coordinated team of architects, engineers, and builders, the **Phuket9** company swiftly progresses from project conception to operational activity. Decades of refined processes demonstrate their effectiveness, enabling us to handle multiple construction projects concurrently. Currently, there are five projects in various stages of completion within the active construction phase, and this is only the beginning.

1 HIGHTONE

Elite village of villas with a sea view located 1 km from Karon Beach in Phuket. Hightone is a well-thought-out eco-friendly and comfortable community, fully focused on long-term residence or vacation.

2 WEKARON

A luxurious resort with breathtaking views of the Andaman Sea, situated in scenic hills just 600 m from Karon Beach, harmoniously blends modern architecture with nature.

5 RAWAYANA

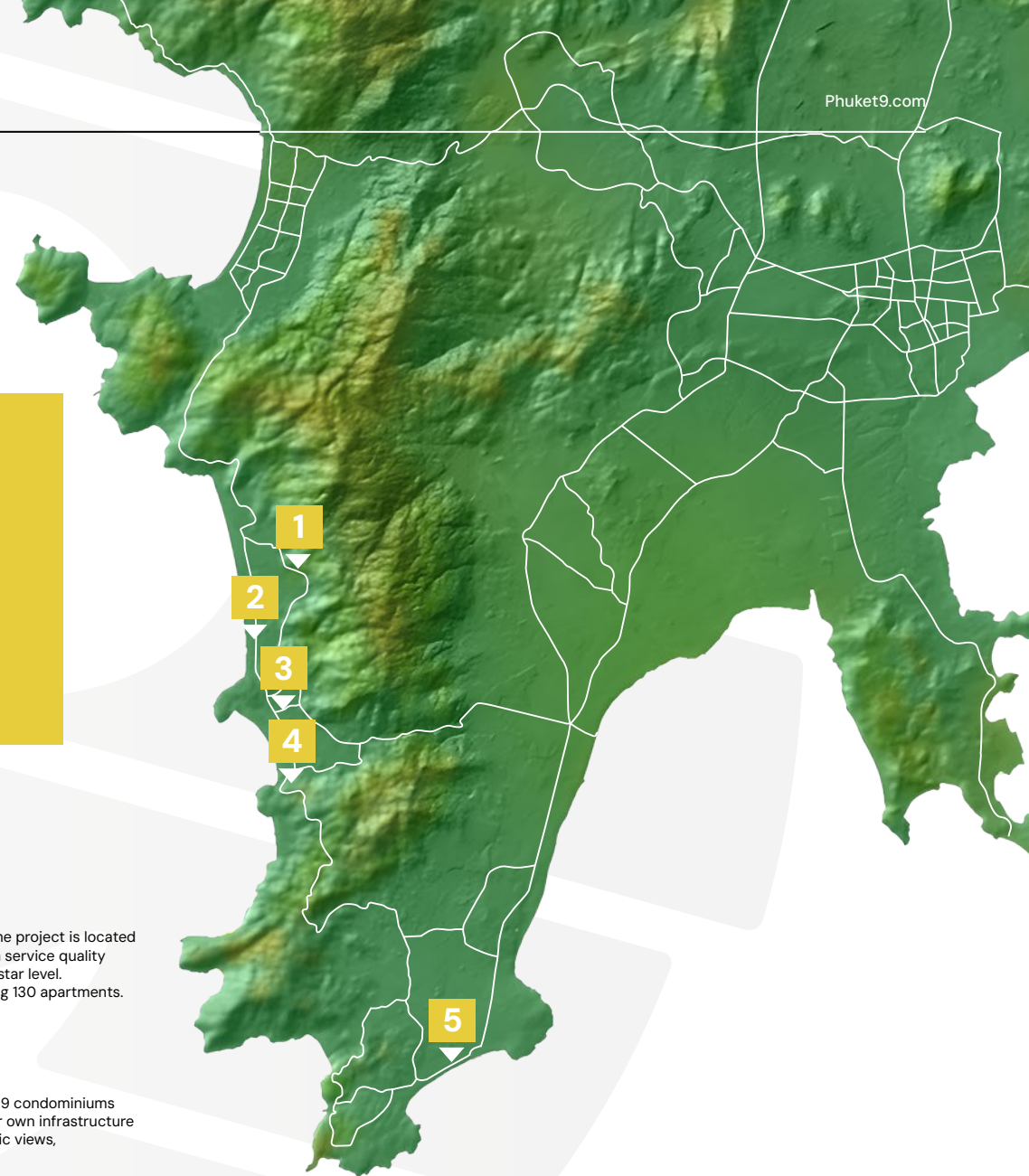
Private pool villas with modern amenities and complimentary access to Rawai Park. Ideal for families, groups, and couples, each villa features a kitchen, BBQ, spacious living area, covered parking, and private poolside entrances.

3 WEKATA3

Popular tourist area of Kata in Phuket. The project is located just 300 meters from the shoreline, with service quality and hotel management elevated to a 5-star level. Small boutique condominium, comprising 130 apartments.

4 PHENOMENON

Phenomenon is a complex consisting of 9 condominiums (separate residential buildings with their own infrastructure and pool), 10 townhouses with panoramic views, and a separate hotel building.



1 KILOMETER FROM KARON BEACH

Nestled just one kilometer from the stunning Karon Beach, a new exclusive community of 11 sea-view villas **Hightone Seaview Villas** is now under construction. These luxurious villas are designed to offer breathtaking views of the Andaman Sea and provide an idyllic setting for both short-term, high-yield rentals and comfortable long-term living. With construction already underway, this development promises to deliver a perfect blend of serenity and modern luxury.



D

E

F1

F2

G1

G2

C2

C1

B3

B2

B1

HIGHTONE

INTERIOR OF THE ROOMS



LUXURY



SPACIOUS

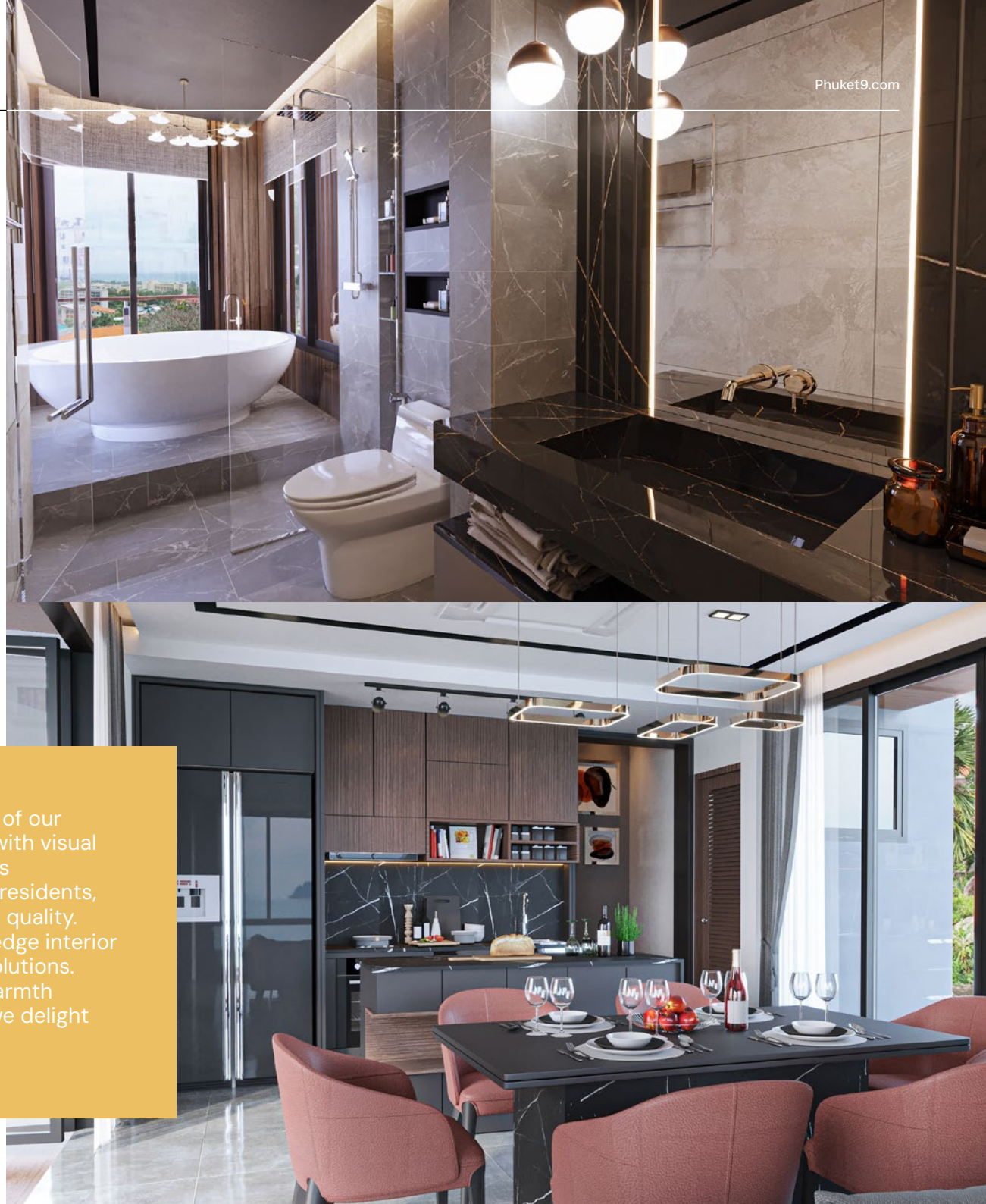


MODERN



BEAUTIFUL

At Phuket9, we place great emphasis on the interior design of our projects, meticulously crafting spaces that blend comfort with visual appeal. We face the ongoing challenge of designing interiors that are suitable for both transient visitors and permanent residents, ensuring that every detail upholds the highest standards of quality. We use only top-tier finishing materials, embrace cutting-edge interior design trends, and integrate advanced home technology solutions. Our decor is selectively chosen to enhance the sense of warmth and comfort. Understanding our guests' needs intimately, we delight in their pleasure with the environments we create.





AMAZING SEAVIEW FOREVER

From each villa, there is a stunning view of Phuket's west coast, offering the opportunity to enjoy breathtaking sunsets every day.

Price from: **19,740,000 THB**

Total: **352,470,000 THB**

> B1 1ST FLOOR

FLOOR TOTAL AREA: **292 SQ. M.**

TOTAL VILLA AREA: **580 SQ. M.**

BEDROOM 3 + BATHROOM 3:	21.4 SQ. M.
BEDROOM 4 + BATHROOM 4:	20.8 SQ. M.
BEDROOM 5 + BATHROOM 5:	25.4 SQ. M.
LIVING + DINING + KITCHEN:	38.5 SQ. M.
STAIRS:	14.5 SQ. M.
TERRACE + STAIRS:	72.8 SQ. M.
GARAGE:	60.5 SQ. M.
SWIMMING POOL:	37.9 SQ. M.



> B1 2ND FLOOR

FLOOR TOTAL AREA: 229 SQ. M.

TOTAL VILLA AREA: 580 SQ. M.



HALL + BALCONY:	31.2 SQ. M.
BEDROOM 1 + BATHROOM + BALCONY:	45.2 SQ. M.
BEDROOM 2 + BATHROOM + BALCONY:	28.6 SQ. M.
STAIRS:	8.7 SQ. M.

> B1 3RD FLOOR

FLOOR TOTAL AREA: **63.7 SQ. M.**

TOTAL VILLA AREA: **580 SQ. M.**

TERRACE + STAIRS:

63.7 SQ. M.



> B2 1ST FLOOR

FLOOR TOTAL AREA: **271 SQ. M.**

TOTAL VILLA AREA: **590 SQ. M.**

BEDROOM 3 + BATHROOM 3:	21.4 SQ. M.
BEDROOM 4 + BATHROOM 4:	20.8 SQ. M.
BEDROOM 5 + BATHROOM 5:	25.4 SQ. M.
LIVING + DINING + KITCHEN:	38.5 SQ. M.
STAIRS:	14.5 SQ. M.
TERRACE + STAIRS:	103.5 SQ. M.
SWIMMING POOL:	47.2 SQ. M.



> B2 2ND FLOOR

FLOOR TOTAL AREA: **260 SQ. M.**

TOTAL VILLA AREA: **590 SQ. M.**

HALL + BALCONY:	31.2 SQ. M.
BEDROOM 1 + BATHROOM + BALCONY:	77.5 SQ. M.
BEDROOM 2 + BATHROOM + BALCONY:	61.9 SQ. M.
TERRACE + STAIRS:	32 SQ. M.
GARAGE	57 SQ. M.



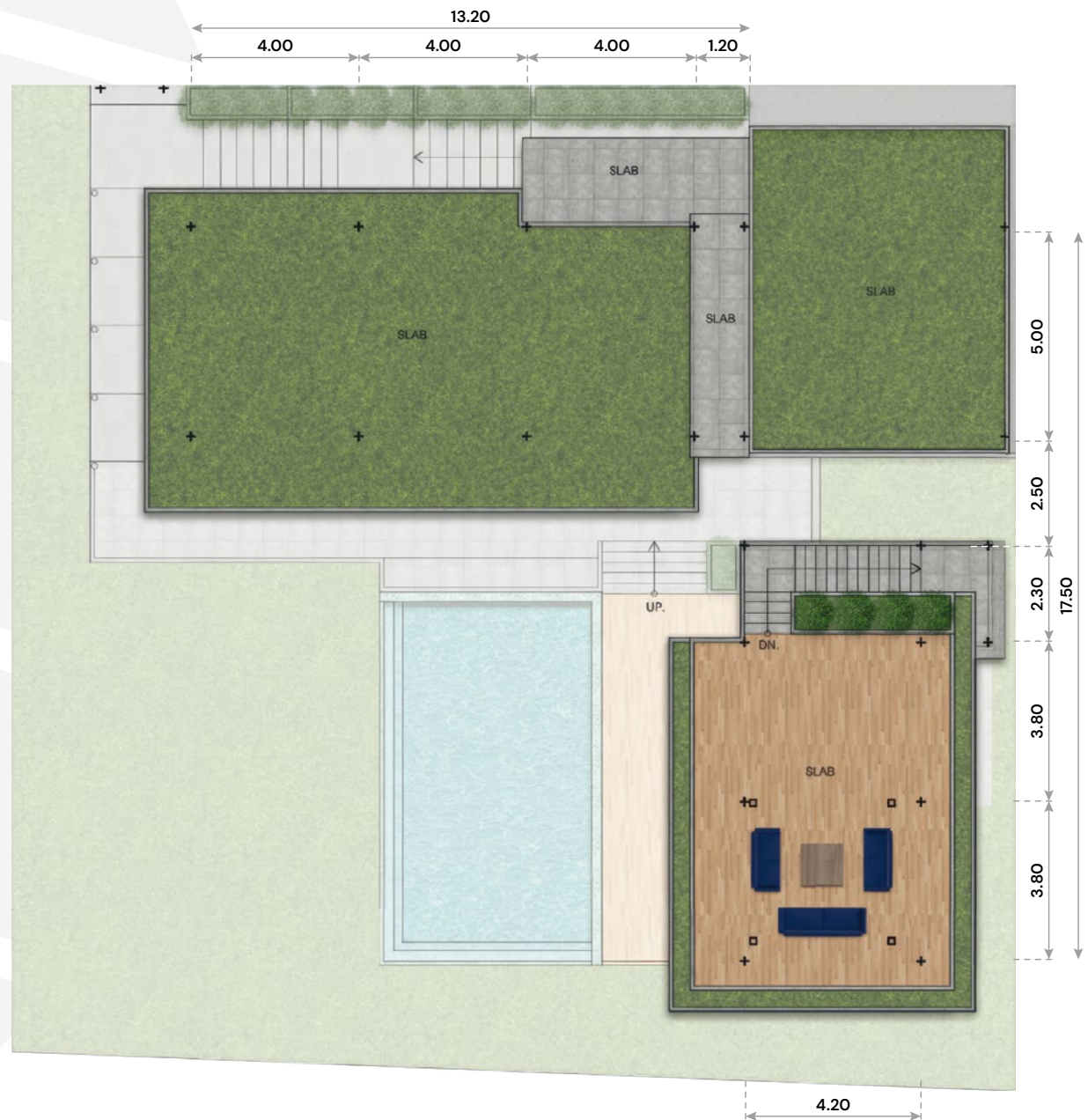
> B2 3RD FLOOR

FLOOR TOTAL AREA: **63.7 SQ. M.**

TOTAL VILLA AREA: **590 SQ. M.**

TERRACE + STAIRS:

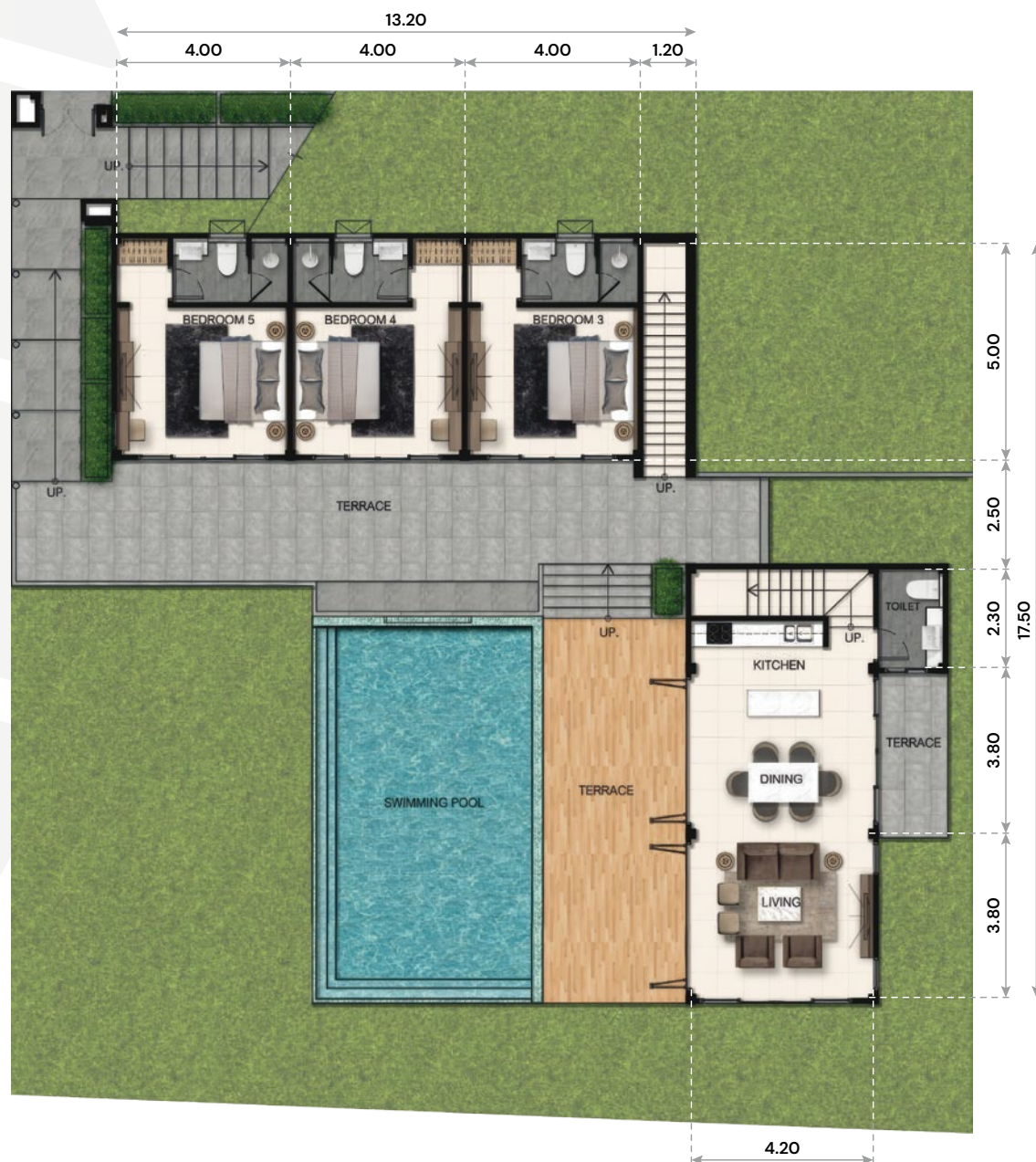
63.7 SQ. M.



> B3 1ST FLOOR

FLOOR TOTAL AREA: **271 SQ. M.**

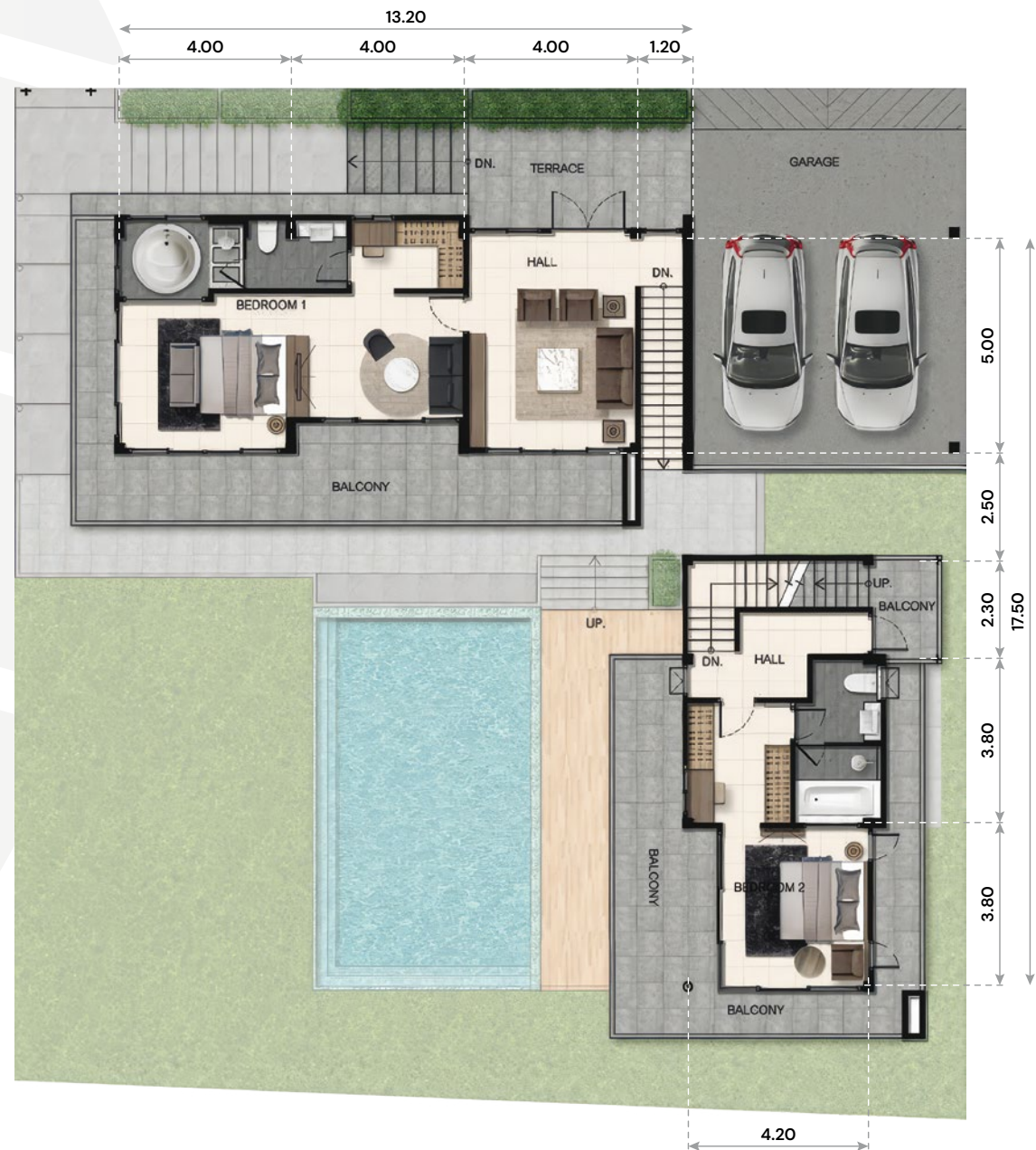
TOTAL VILLA AREA: **590 SQ. M.**



> B3 2ND FLOOR

FLOOR TOTAL AREA: **260 SQ. M.**

TOTAL VILLA AREA: **590 SQ. M.**



HALL + BALCONY:	31.2 SQ. M.
BEDROOM 1 + BATHROOM + BALCONY:	77.5 SQ. M.
BEDROOM 2 + BATHROOM + BALCONY:	61.9 SQ. M.
TERRACE + STAIRS:	32 SQ. M.
GARAGE	57 SQ. M.

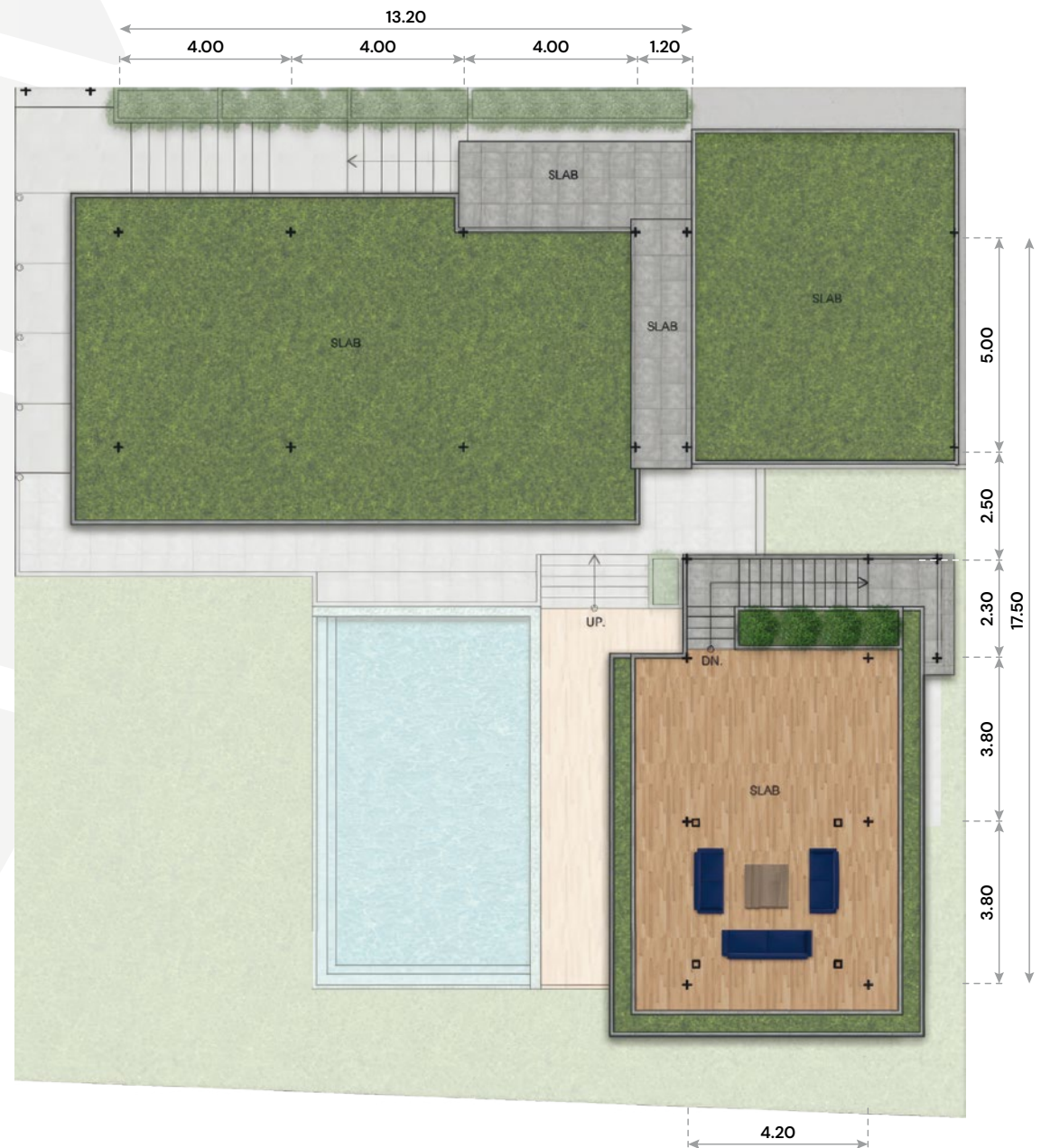
> B3 3RD FLOOR

FLOOR TOTAL AREA: **63.7 SQ. M.**

TOTAL VILLA AREA: **590 SQ. M.**

TERRACE + STAIRS:

63.7 SQ. M.



> C1 1ST FLOOR

FLOOR TOTAL AREA: **244 SQ. M.**

TOTAL VILLA AREA: **545 SQ. M.**

BEDROOM 1 + BATHROOM 1:	21.4 SQ. M.
BEDROOM 2 + BATHROOM 2:	21.4 SQ. M.
LIVING + DINING + KITCHEN:	38.5 SQ. M.
TERRACE + STAIRS:	94.5 SQ. M.
STAIRS + STORAGE:	12 SQ. M.
TOILET:	4 SQ. M.
SWIMMING POOL:	44.5 SQ. M.



> C1 2ND FLOOR

FLOOR TOTAL AREA: **242 SQ. M.**

TOTAL VILLA AREA: **545 SQ. M.**

HALL + BALCONY:	18 SQ. M.
BEDROOM 1 + BATHROOM + BALCONY:	70.3 SQ. M.
BEDROOM 2 + BATHROOM + BALCONY:	61.9 SQ. M.
TERRACE + STAIRS:	32.4 SQ. M.
GARAGE	58.5 SQ. M.



> C1 3RD FLOOR

FLOOR TOTAL AREA: **63.7 SQ. M.**

TOTAL VILLA AREA: **545 SQ. M.**

TERRACE + STAIRS:

63.7 SQ. M.

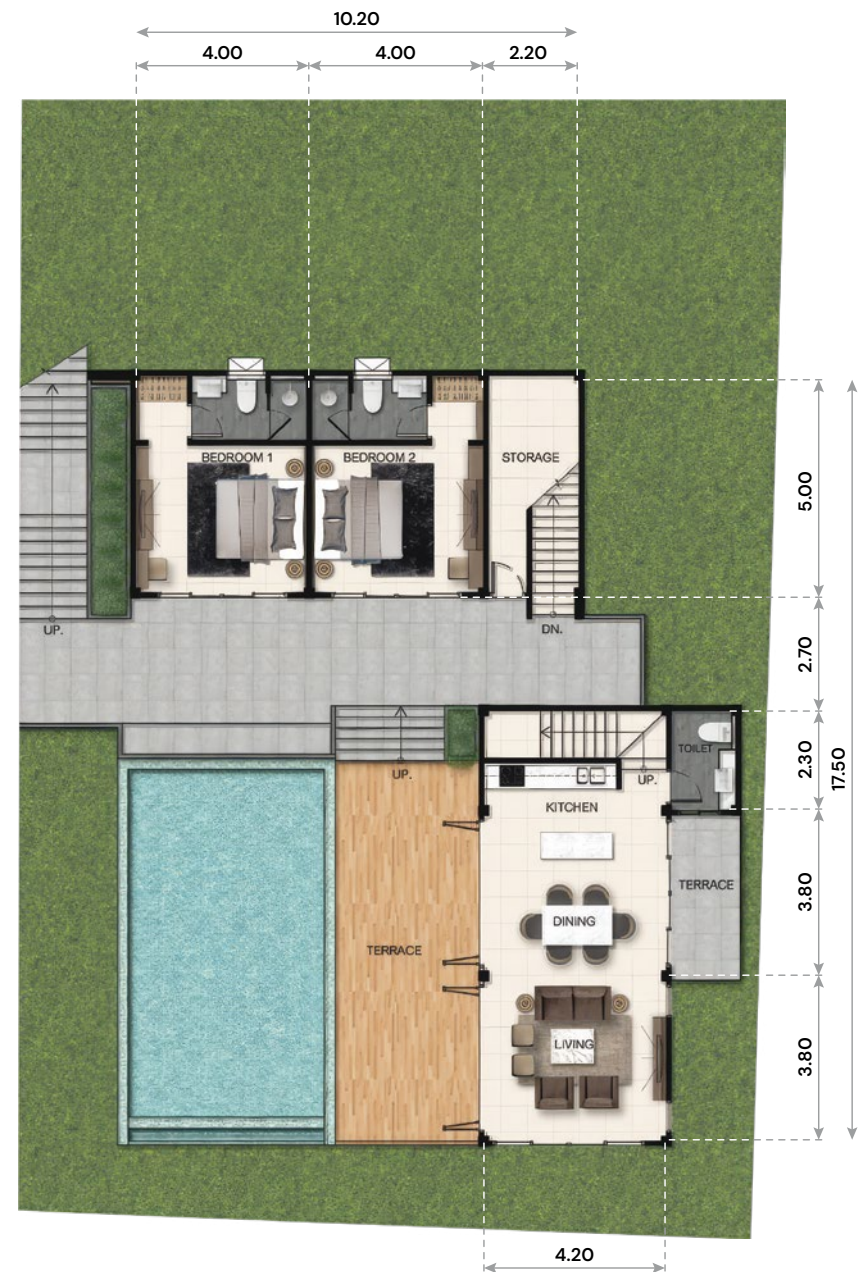


> C2 1ST FLOOR

FLOOR TOTAL AREA: **234 SQ. M.**

TOTAL VILLA AREA: **530 SQ. M.**

BEDROOM 1 + BATHROOM 1:	21.3 SQ. M.
BEDROOM 2 + BATHROOM 2:	21.3 SQ. M.
LIVING + DINING + KITCHEN:	38.5 SQ. M.
TERRACE + STAIRS:	86 SQ. M.
STAIRS + STORAGE:	12 SQ. M.
TOILET:	4 SQ. M.
SWIMMING POOL:	44.5 SQ. M.

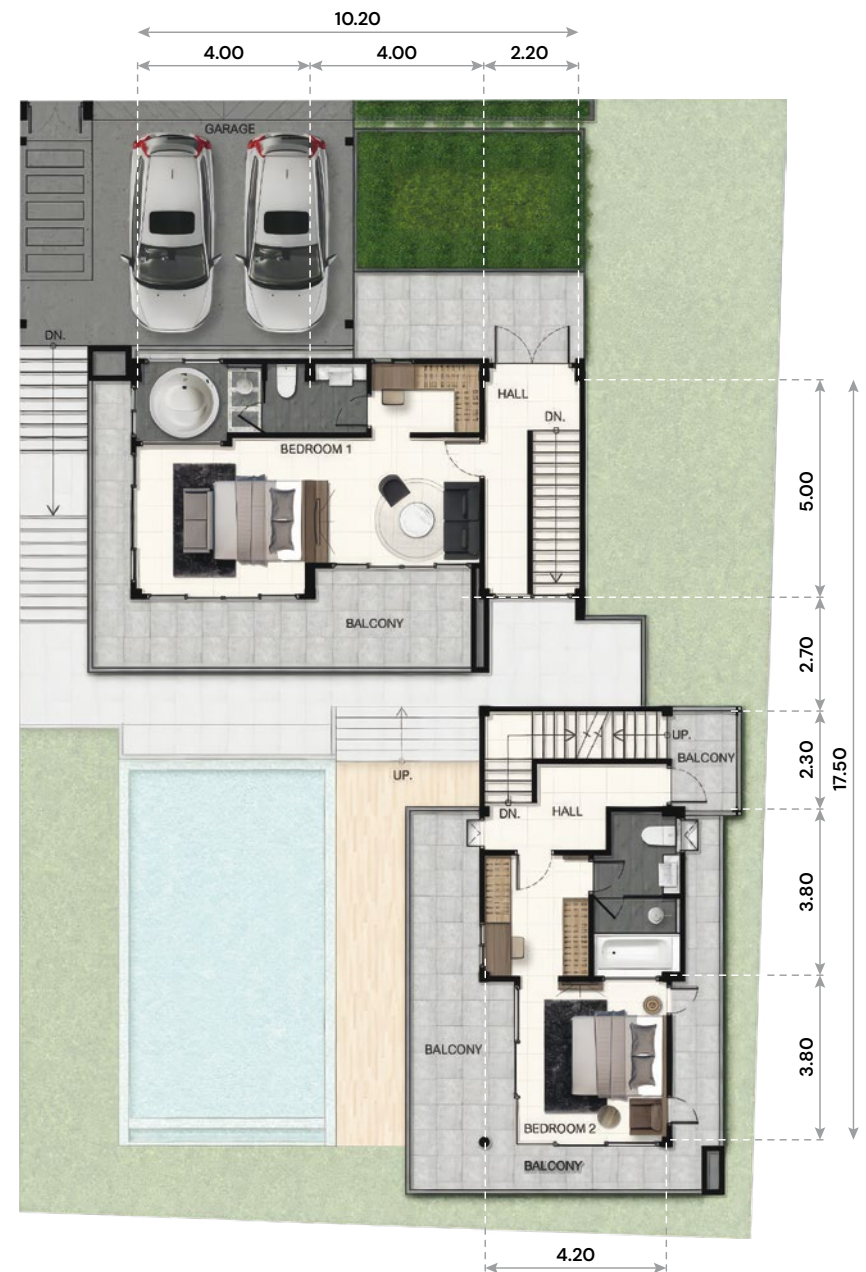


> C2 2ND FLOOR

FLOOR TOTAL AREA: **235 SQ. M.**

TOTAL VILLA AREA: **530 SQ. M.**

HALL + BALCONY:	18 SQ. M.
BEDROOM 1 + BATHROOM + BALCONY:	65.5 SQ. M.
BEDROOM 2 + BATHROOM + BALCONY:	61.9 SQ. M.
TERRACE + STAIRS:	32.4 SQ. M.
GARAGE	34.4 SQ. M.
GARDEN	21.3 SQ. M.



> C2 3RD FLOOR

FLOOR TOTAL AREA: **63.7 SQ. M.**

TOTAL VILLA AREA: **530 SQ. M.**

TERRACE + STAIRS:

63.7 SQ. M.



D 1ST FLOOR

FLOOR TOTAL AREA: **196 SQ. M.**

TOTAL VILLA AREA: **365 SQ. M.**



BEDROOM 1 + BATHROOM 1:	24 SQ. M.
LIVING + DINING + KITCHEN:	38.5 SQ. M.
TERRACE + STAIRS:	61.1 SQ. M.
STAIRS + STORAGE:	15 SQ. M.
TOILET:	4 SQ. M.
SWIMMING POOL:	25.5 SQ. M.
GARAGE:	26.5 SQ. M.

> D 2ND FLOOR

FLOOR TOTAL AREA: **107.5 SQ. M.**

TOTAL VILLA AREA: **365 SQ. M.**

HALL + BALCONY: **10.5 SQ. M.**
 BEDROOM 1 + BATHROOM + BALCONY: **35.5 SQ. M.**
 BEDROOM 2 + BATHROOM + BALCONY: **61.6 SQ. M.**



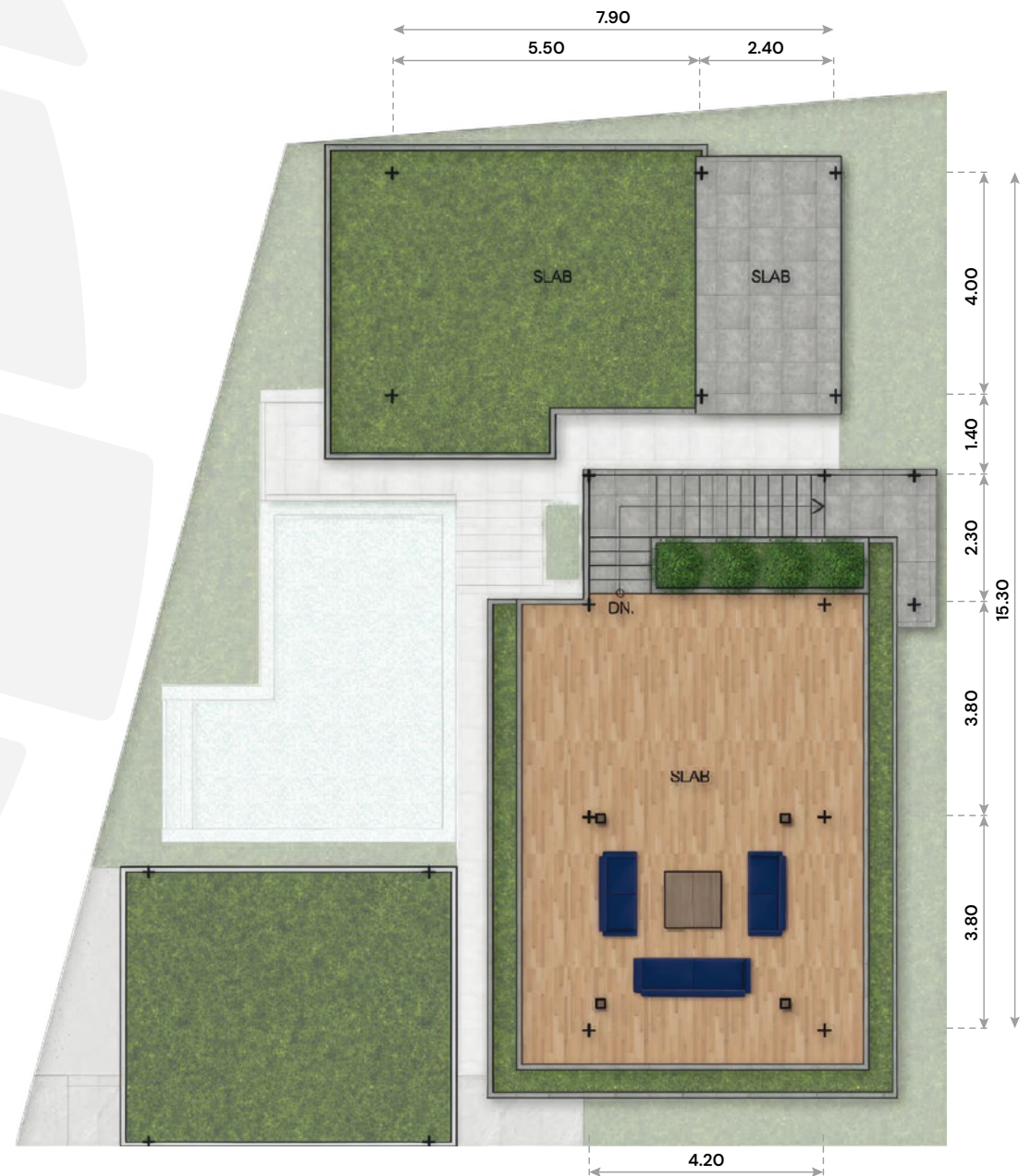
> D 3RD FLOOR

FLOOR TOTAL AREA: **63.7 SQ. M.**

TOTAL VILLA AREA: **365 SQ. M.**

TERRACE + STAIRS:

63.7 SQ. M.



> E 1ST FLOOR

FLOOR TOTAL AREA: **354 SQ. M.**

TOTAL VILLA AREA: **590 SQ. M.**

BEDROOM 1 + BATHROOM 1:	21.3 SQ. M.
BEDROOM 2 + BATHROOM 2:	20.8 SQ. M.
BEDROOM 3 + BATHROOM 3:	20.8 SQ. M.
LIVING + DINING + KITCHEN:	38.5 SQ. M.
TERRACE + STAIRS:	132.5 SQ. M.
STAIRS:	14.5 SQ. M.
GARAGE:	45.5 SQ. M.
SWIMMING POOL:	56.8 SQ. M.



> E 2ND FLOOR

FLOOR TOTAL AREA: **173.9 SQ. M.**

TOTAL VILLA AREA: **590 SQ. M.**

HALL + BALCONY: **31.2 SQ. M.**
 BEDROOM 1 + BATHROOM + BALCONY: **81 SQ. M.**
 BEDROOM 2 + BATHROOM + BALCONY: **61.6 SQ. M.**



> E 3RD FLOOR

FLOOR TOTAL AREA: **63.7 SQ. M.**

TOTAL VILLA AREA: **590 SQ. M.**

TERRACE + STAIRS: **63.7 SQ. M.**



> F1 1ST FLOOR

FLOOR TOTAL AREA: **364 SQ. M.**

TOTAL VILLA AREA: **600 SQ. M.**

BEDROOM 1 + BATHROOM 1:	21 SQ. M.
BEDROOM 2 + BATHROOM 2:	21 SQ. M.
BEDROOM 3 + BATHROOM 3:	21.3 SQ. M.
LIVING + DINING + KITCHEN:	38.5 SQ. M.
TERRACE + STAIRS:	132 SQ. M.
STAIRS:	14.5 SQ. M.
GARAGE:	50.4 SQ. M.
SWIMMING POOL:	62.3 SQ. M.



> F1 2ND FLOOR

FLOOR TOTAL AREA: **173.5 SQ. M.**

TOTAL VILLA AREA: **600 SQ. M.**

HALL + BALCONY: **31.2 SQ. M.**
 BEDROOM 5 + BATHROOM + BALCONY: **80.3 SQ. M.**
 BEDROOM 2 + BATHROOM + BALCONY: **61.6 SQ. M.**



> F1 3RD FLOOR

FLOOR TOTAL AREA: **63.7 SQ. M.**

TOTAL VILLA AREA: **600 SQ. M.**

TERRACE + STAIRS:

63.7 SQ. M.

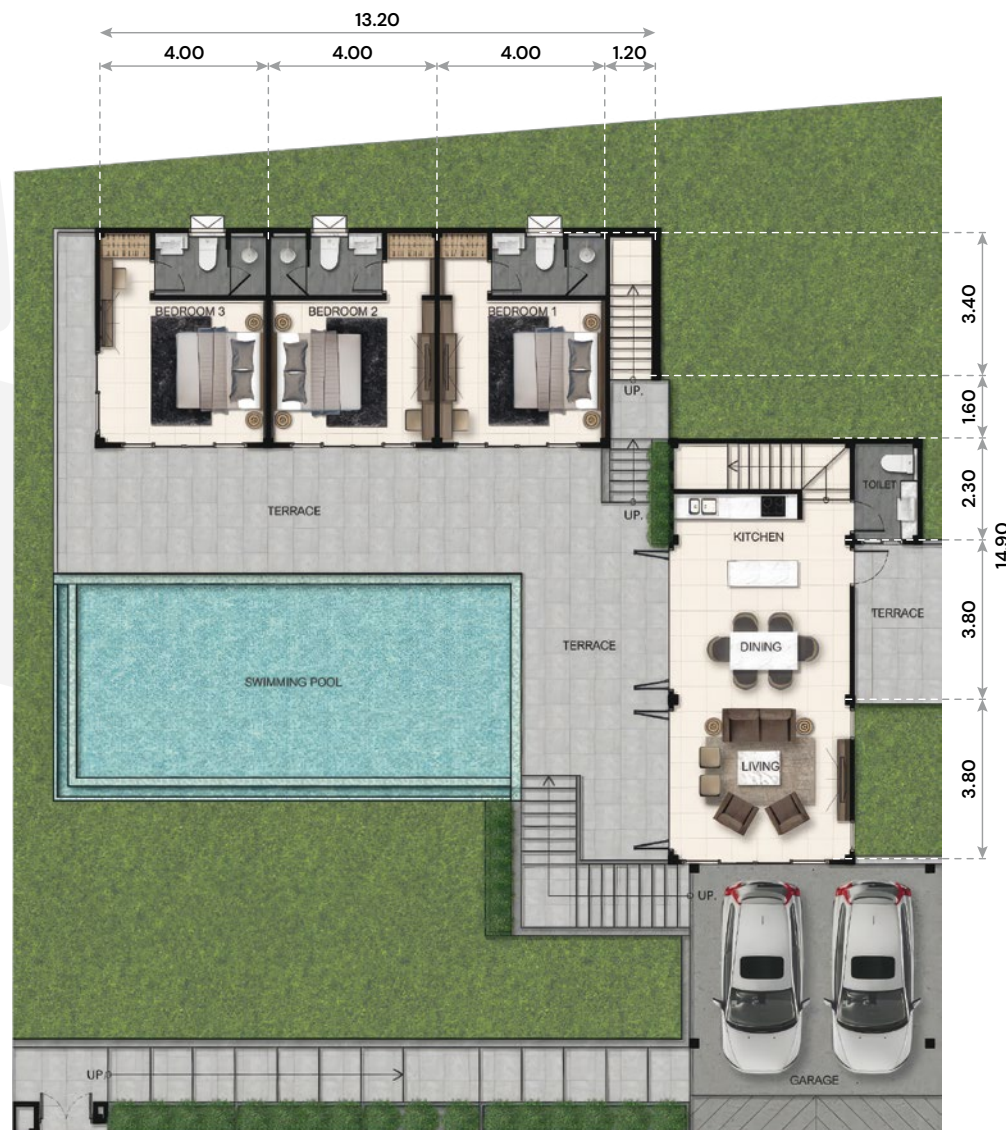


> F2 1ST FLOOR

FLOOR TOTAL AREA: **334 SQ. M.**

TOTAL VILLA AREA: **570 SQ. M.**

BEDROOM 1 + BATHROOM 1:	21 SQ. M.
BEDROOM 2 + BATHROOM 2:	21 SQ. M.
BEDROOM 3 + BATHROOM 3:	21.3 SQ. M.
LIVING + DINING + KITCHEN:	38.5 SQ. M.
TERRACE + STAIRS:	113 SQ. M.
STAIRS:	14.5 SQ. M.
GARAGE:	40 SQ. M.
SWIMMING POOL:	60 SQ. M.



> F2 2ND FLOOR

FLOOR TOTAL AREA: **173.5 SQ. M.**

TOTAL VILLA AREA: **570 SQ. M.**

HALL + BALCONY: **31.2 SQ. M.**
 BEDROOM 4 + BATHROOM + BALCONY: **80.3 SQ. M.**
 BEDROOM 2 + BATHROOM + BALCONY: **61.6 SQ. M.**



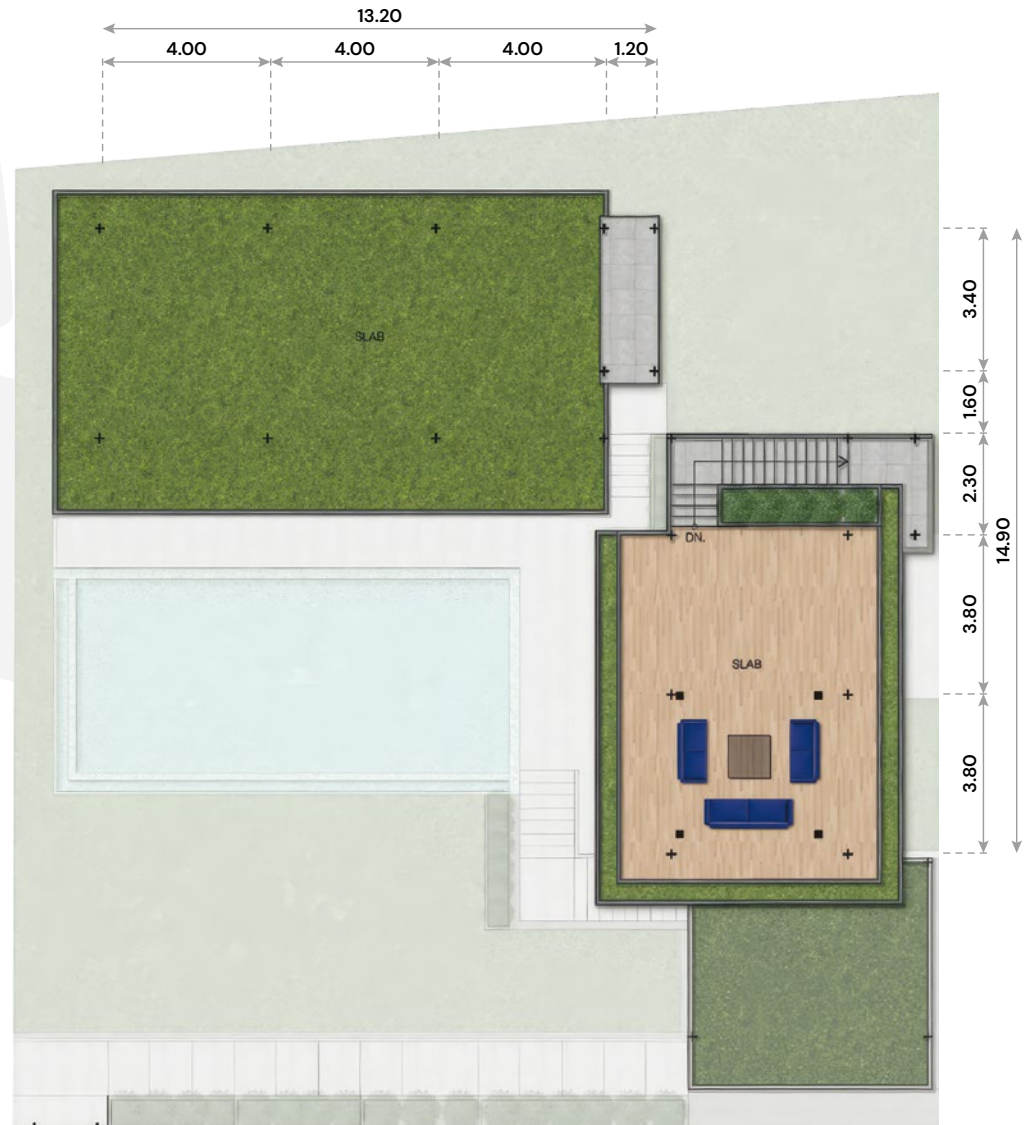
> F2 3RD FLOOR

FLOOR TOTAL AREA: **63.7 SQ. M.**

TOTAL VILLA AREA: **570 SQ. M.**

TERRACE + STAIRS:

63.7 SQ. M.



> G1 1ST FLOOR

FLOOR TOTAL AREA: **335 SQ. M.**

TOTAL VILLA AREA: **535 SQ. M.**

BEDROOM 1 + BATHROOM 1:	21.3 SQ. M.
BEDROOM 2 + BATHROOM 2:	21.3 SQ. M.
LIVING + DINING + KITCHEN:	38.5 SQ. M.
TERRACE + STAIRS:	133.5 SQ. M.
STAIRS + STORAGE:	12 SQ. M.
GARAGE:	42.7 SQ. M.
SWIMMING POOL:	53.4 SQ. M.



> G1 2ND FLOOR

FLOOR TOTAL AREA: **141 SQ. M.**

TOTAL VILLA AREA: **535 SQ. M.**

HALL + BALCONY: **10.5 SQ. M.**
 BEDROOM 1 + BATHROOM + BALCONY: **69 SQ. M.**
 BEDROOM 2 + BATHROOM + BALCONY: **61.9 SQ. M.**



> G1 3RD FLOOR

FLOOR TOTAL AREA: **63.7 SQ. M.**

TOTAL VILLA AREA: **535 SQ. M.**

TERRACE + STAIRS:

63.7 SQ. M.



> G2 1ST FLOOR

FLOOR TOTAL AREA: **312 SQ. M.**

TOTAL VILLA AREA: **515 SQ. M.**

BEDROOM 1 + BATHROOM 1:	21.3 SQ. M.
BEDROOM 2 + BATHROOM 2:	21.3 SQ. M.
LIVING + DINING + KITCHEN:	38.5 SQ. M.
TERRACE + STAIRS:	110.5 SQ. M.
STAIRS + STORAGE:	12 SQ. M.
GARAGE:	43.2 SQ. M.
SWIMMING POOL:	53.4 SQ. M.



> G2 2ND FLOOR

FLOOR TOTAL AREA: **141 SQ. M.**

TOTAL VILLA AREA: **515 SQ. M.**

HALL + BALCONY: **10.5 SQ. M.**
 BEDROOM 1 + BATHROOM + BALCONY: **69 SQ. M.**
 BEDROOM 2 + BATHROOM + BALCONY: **61.9 SQ. M.**



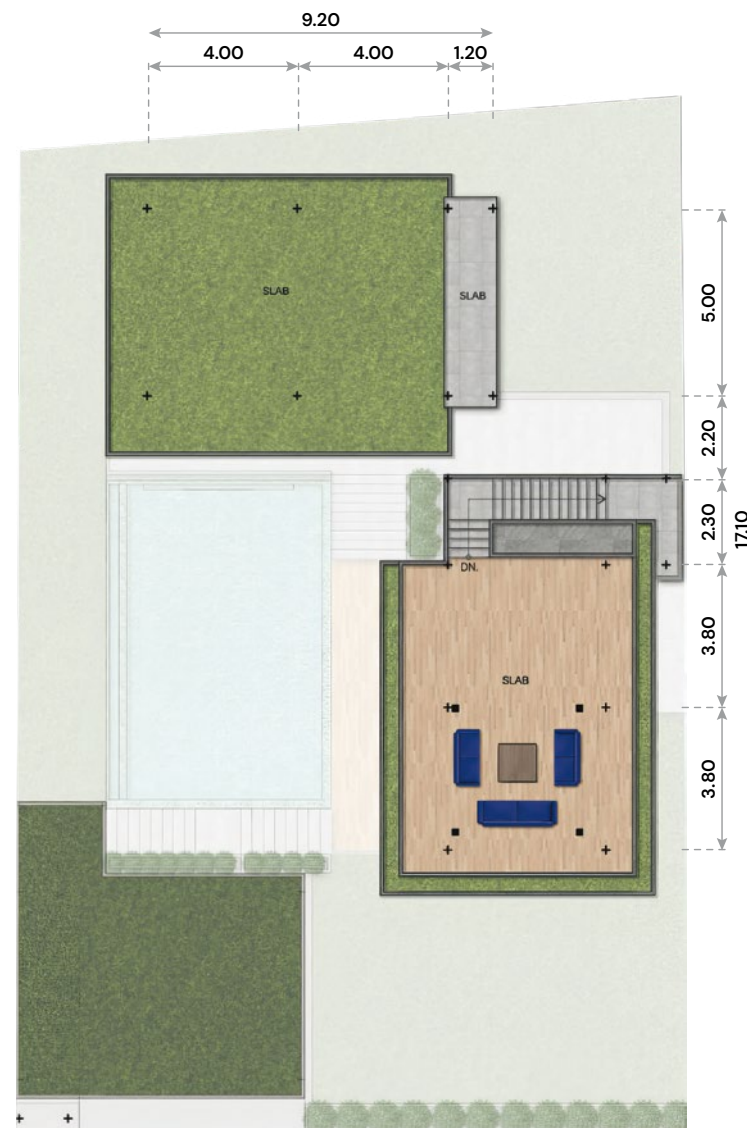
> G2 3RD FLOOR

FLOOR TOTAL AREA: **63.7 SQ. M.**

TOTAL VILLA AREA: **515 SQ. M.**

TERRACE + STAIRS:

63.7 SQ. M.



> 10 REASONS TO INVEST IN PHUKET PROPERTY

Phuket is one of the world's most popular tropical destinations, attracting over 13 million tourists annually.



HIGH OCCUPANCY RATES



NO BANK COMPLIANCE BARRIERS



STRONG CAPITAL GROWTH



GEOPOLITICAL NEUTRALITY



FREEHOLD OWNERSHIP FOR FOREIGNERS



SIMPLE EXIT STRATEGY



STABLE AND GROWING ECONOMY



PERSONAL USE



WORLD-CLASS INFRASTRUCTURE



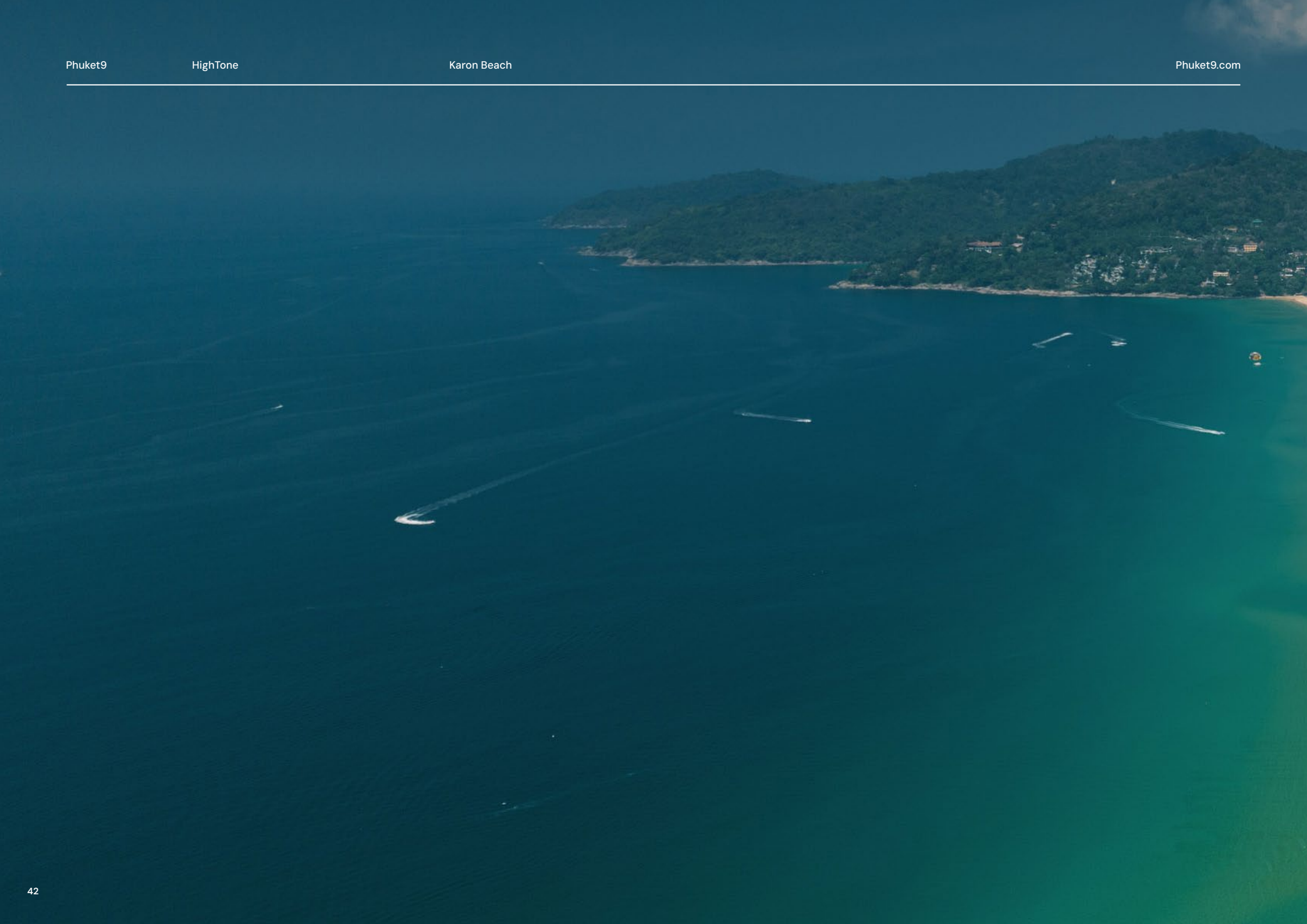
TOURISM GROWTH



The company Phuket9 has been operating since 2004. Over the course of 20 years, the company's management has succeeded in scaling up from a small developer to the largest construction and management company on the island of Phuket. As of today, the company's assets include various enterprises with different structures and operational principles.

Each division of the company shares a common goal – to make the company's properties attractive to guests and ensure a regular return on investment. This approach enables the company to grow annually and expand its presence in the Phuket market. We are experts in forming a unified strategy for interdepartmental cooperation, creating new products while clearly understanding their future trajectory.







HIGHTONE

KARON SEAVIEW VILLAS & GARDEN

NEW PROJECT BY



 [phuket9develop](#)

 [phuket9](#)

[phuket9.com](#)