



RAWAYANA

beachfront village

NEW PROJECT FROM PHUKET9

The village that will ensure maximum demand not only for the guests of the complex, but also for all residents and tourists in the Rawai area.



Phuket9.com



> CONTENTS

The Map	2
Master Plan	3
Rawayana North	4
About Project	5
Interior	6
Floor Plan	8
Unit Types	15
Rawayana South	22
About Project	23
Interior	24
Floor Plan	26
Unit Types	31
Rawayana East Villas	40
About Project	41
Interior	42
Villa Types	44
About Phuket9	67

THE MAP OF PHUKET9 PROJECTS

With a well-coordinated team of architects, engineers, and builders, the **Phuket9** company swiftly progresses from project conception to operational activity. Decades of refined processes demonstrate their effectiveness, enabling us to handle multiple construction projects concurrently. Currently, there are five projects in various stages of completion within the active construction phase, and this is only the beginning.

1 HIGHTONE

Elite village of villas with a sea view located 1 km from Karon Beach in Phuket. Hightone is a well-thought-out eco-friendly and comfortable community, fully focused on long-term residence or vacation.

2 WEKARON

A luxurious resort with breathtaking views of the Andaman Sea, situated in scenic hills just 600 m from Karon Beach, harmoniously blends modern architecture with nature.

5 RAWAYANA

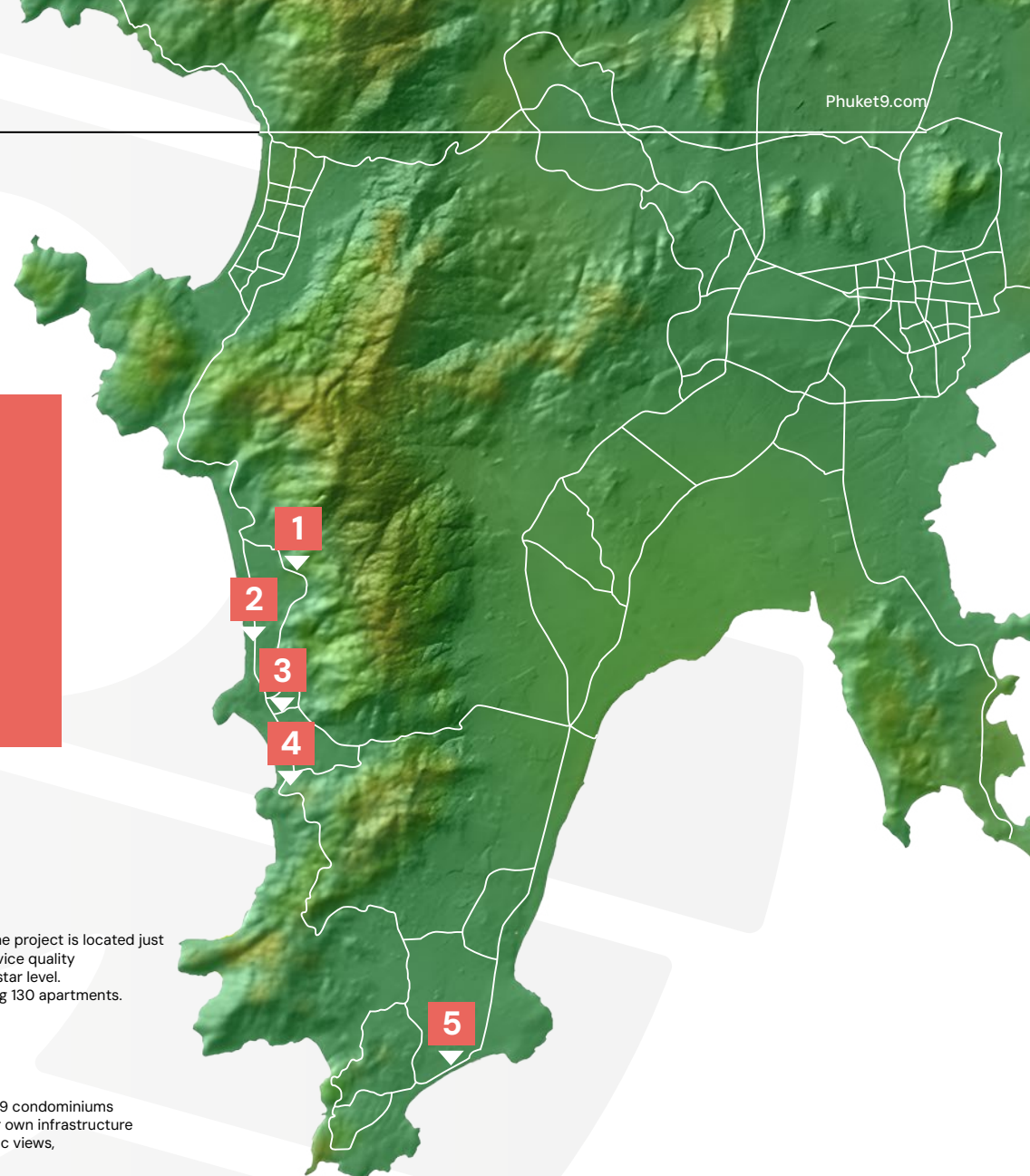
Private pool villas with modern amenities and complimentary access to Rawai Park. Ideal for families, groups, and couples, each villa features a kitchen, BBQ, spacious living area, covered parking, and private poolside entrances.

3 WEKATA3

Popular tourist area of Kata in Phuket. The project is located just 300 meters from the shoreline, with service quality and hotel management elevated to a 5-star level. Small boutique condominium, comprising 130 apartments.

4 PHENOMENON

Phenomenon is a complex consisting of 9 condominiums (separate residential buildings with their own infrastructure and pool), 10 townhouses with panoramic views, and a separate hotel building.





1

5

7

6

8

4

10

14. RAWAYANA NORTH

3

2

13. RAWAYANA EAST

15. RAWAYANA SOUTH

12

11

9

1. RAWAYANA West Villas
2. RAWAYANA Central Park Villas
3. Love Rawai Hotel
4. The Lord Shrimant Ganpati Bappa Devalai Temple
5. Rawai Park Language School
6. Rawai Park
7. Love Rawai Cafe
8. Wellness Medical Center

9. Mixxmall Rawayana – Shopping Center
10. Phuke9 Office
11. Dumbledore Bar
12. White Owl Hotel
13. RAWAYANA East Villas
14. RAWAYANA North Condominium
15. RAWAYANA South Condominium

RAWAYANA NORTH

Welcome to **Rawayana North**, the latest addition to Phuket's luxury condominium scene, offering an unparalleled living experience. Nestled in the heart of the vibrant Rawai district, this new development boasts two elegant buildings designed to provide comfort and style for its residents. Rawayana North comprises two contemporary buildings, each thoughtfully designed to blend seamlessly with the natural beauty of the surroundings.

> ABOUT PROJECT

Phuket9's flagship project is situated directly on the seafront in the center of Rawai Promenade. The complex includes the largest list of infrastructure on Phuket, with types of real estate consisting of villas, condominium apartments, and commercial retail spaces. The complex includes a children's amusement park, a medical clinic, an international school, a kindergarten, a sports complex, and much more.



1 CONDOMINIUM
(2 BUILDINGS)



INTERNATIONAL
SCHOOL



150 APARTMENTS



KIDS PARK



SHOPPING MALL



MEDICAL CLINIC



FOOD
SUPERMARKET



CONSTRUCTION
IN PROGRESS



DISTANCE
TO THE BEACH 30 M.



INTERIOR OF THE ROOMS



LUXURY



SPACIOUS



MODERN



BEAUTIFUL



At Phuket9, we prioritize the interior design of our projects, carefully creating spaces that combine comfort with aesthetic allure. Our challenge lies in crafting interiors that cater to both short-term guests and long-term residents while maintaining the highest quality standards. We exclusively select premium finishing materials, adopt the latest trends in interior design, and incorporate sophisticated home technology. Our decor is thoughtfully selected to add a welcoming warmth and coziness. We deeply understand our guests' preferences, and it brings us joy to see them delighted by the spaces we design.





MORE THAN JUST CONDO

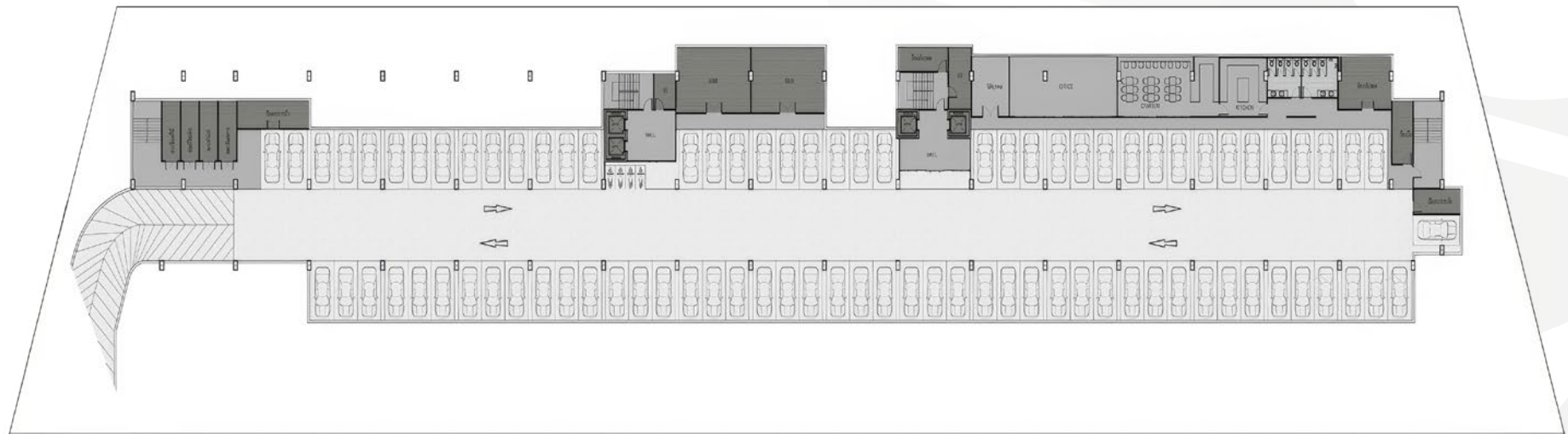
The unique concept of the project makes it a focal point for the entire Rawai area. Properties here have high rental potential regardless of the season. There are 35 premium villas and 2 condominiums in the complex.

Price from: **5,060,000 THB**

Total: **2,000,010,000 THB**

FLOOR PLAN

UNDERGROUND PARKING



FLOOR PLAN

FLOOR 1



FLOOR PLAN

FLOOR 2



FLOOR PLAN

FLOOR 3



FLOOR PLAN

FLOOR 4



FLOOR PLAN

FLOOR 5



FLOOR PLAN

FLOOR 6 (ROOFTOP)



AREA 70.3S Q. M.

UNIT A - 2 BEDROOM



AREA 91.8 SQ. M.

UNIT A - 2 BEDROOM WITH COMMON POOL



AREA 102.5 SQ. M.

UNIT A - 2 BEDROOM WITH PRIVATE POOL



> AREA 82.3 SQ. M.

UNIT B - 2 BEDROOM



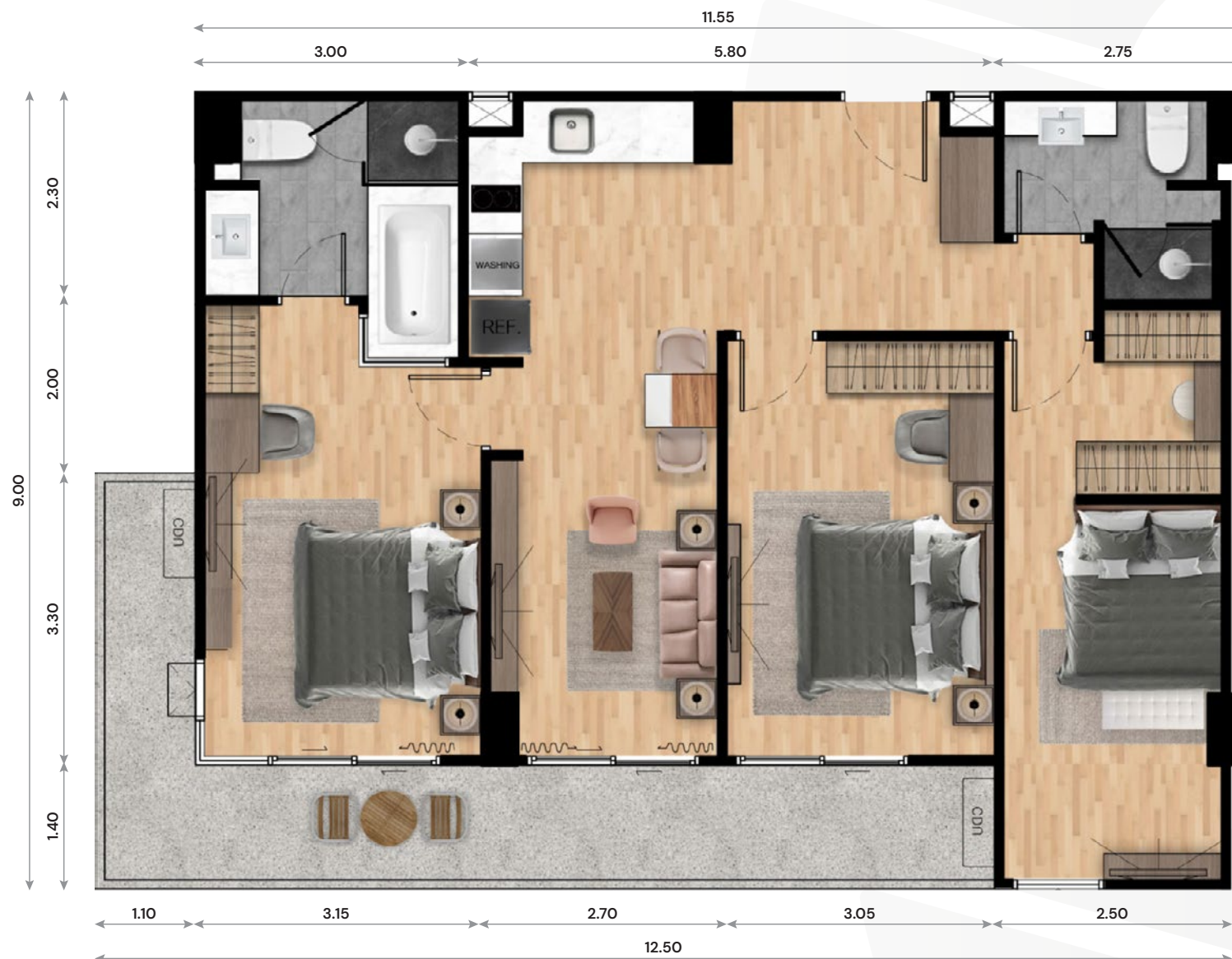
AREA 127.4 SQ. M.

UNIT B - 2 BEDROOM WITH PRIVATE POOL



AREA 104.3 SQ. M.

UNIT C - 3 BEDROOM



AREA 53.8 SQ. M.

UNIT D - 2 BEDROOM



▶ RAWAYANA SOUTH

Rawayana South Condominium is the latest development by the architectural bureau of Phuket9. The contemporary and innovative design of its four buildings is, without exaggeration, a true architectural landmark in the Rawai area. The interior design of the residences is tailored exclusively for the premium segment and currently represents the most luxurious and distinctive offering in this part of Phuket.

> ABOUT PROJECT

The core concept behind **Rawayana South Condominium** is to serve as the premium rental segment of the greater Rawayana development. The apartments have been specifically designed to maximize both profitability and comfort for short-term luxury stays.

The complex offers everything required to operate at the level of a five-star resort: four swimming pools, retail outlets, beauty salons, and more. Exceptional hospitality standards are maintained by our in-house management company, Hotels9, ensuring seamless service and maximum guest satisfaction.



1 CONDOMINIUMS
(4 BUILDINGS)



INTERNATIONAL
SCHOOL



108 APARTMENTS



KIDS PARK



SHOPPING MALL



MEDICAL CLINIC



FOOD
SUPERMARKET



CONSTRUCTION
IN PROGRESS



DISTANCE
TO THE BEACH 10 M.



➤ INTERIOR OF THE ROOMS



LUXURY



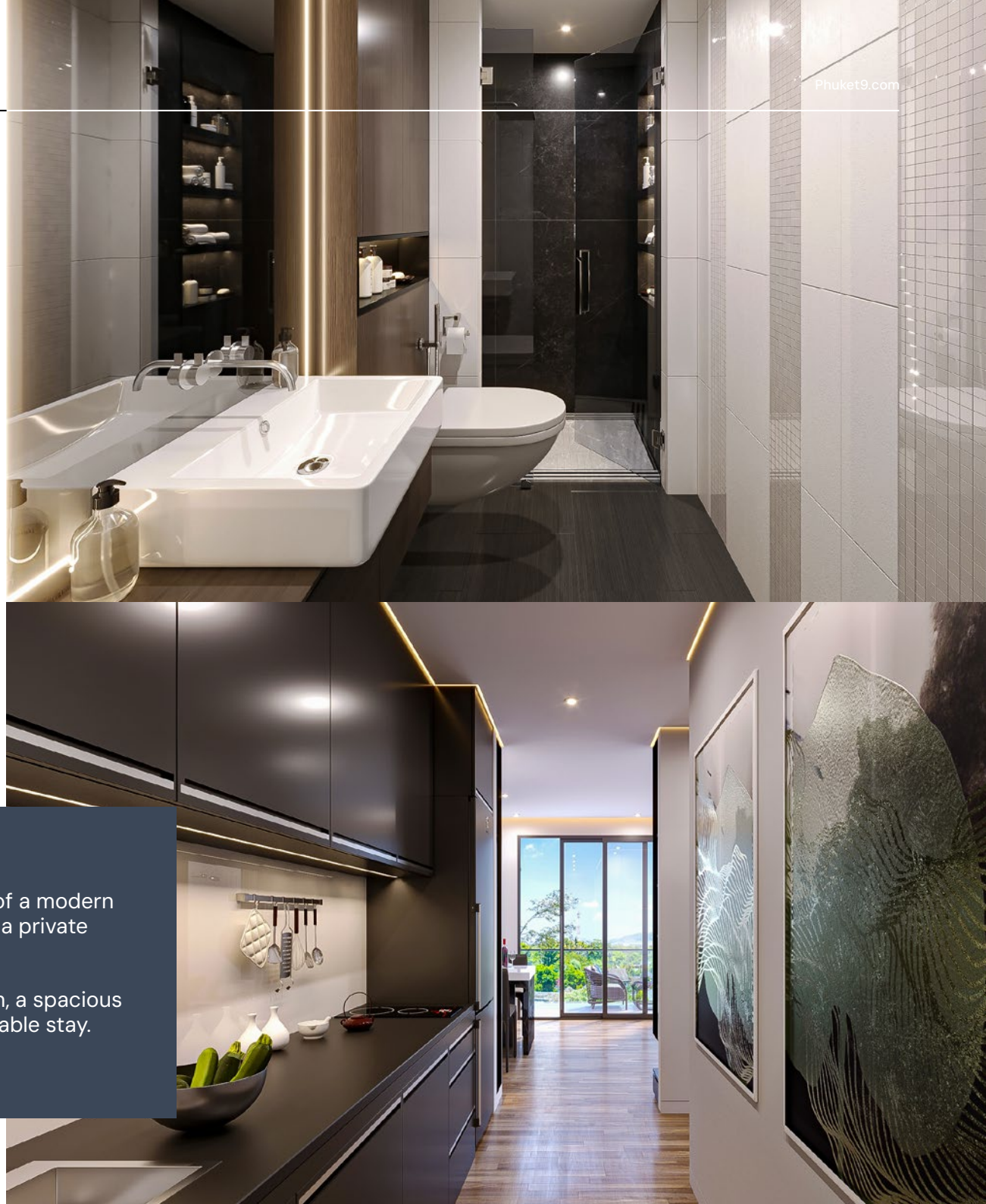
SPACIOUS



MODERN



BEAUTIFUL



The concept of each apartment is a refined interpretation of a modern five-star hotel suite, enhanced with the full functionality of a private residence.

Each unit features a stylish interior, a fully equipped kitchen, a spacious bathroom, and all the essentials needed for a truly comfortable stay.



MORE THAN JUST CONDO

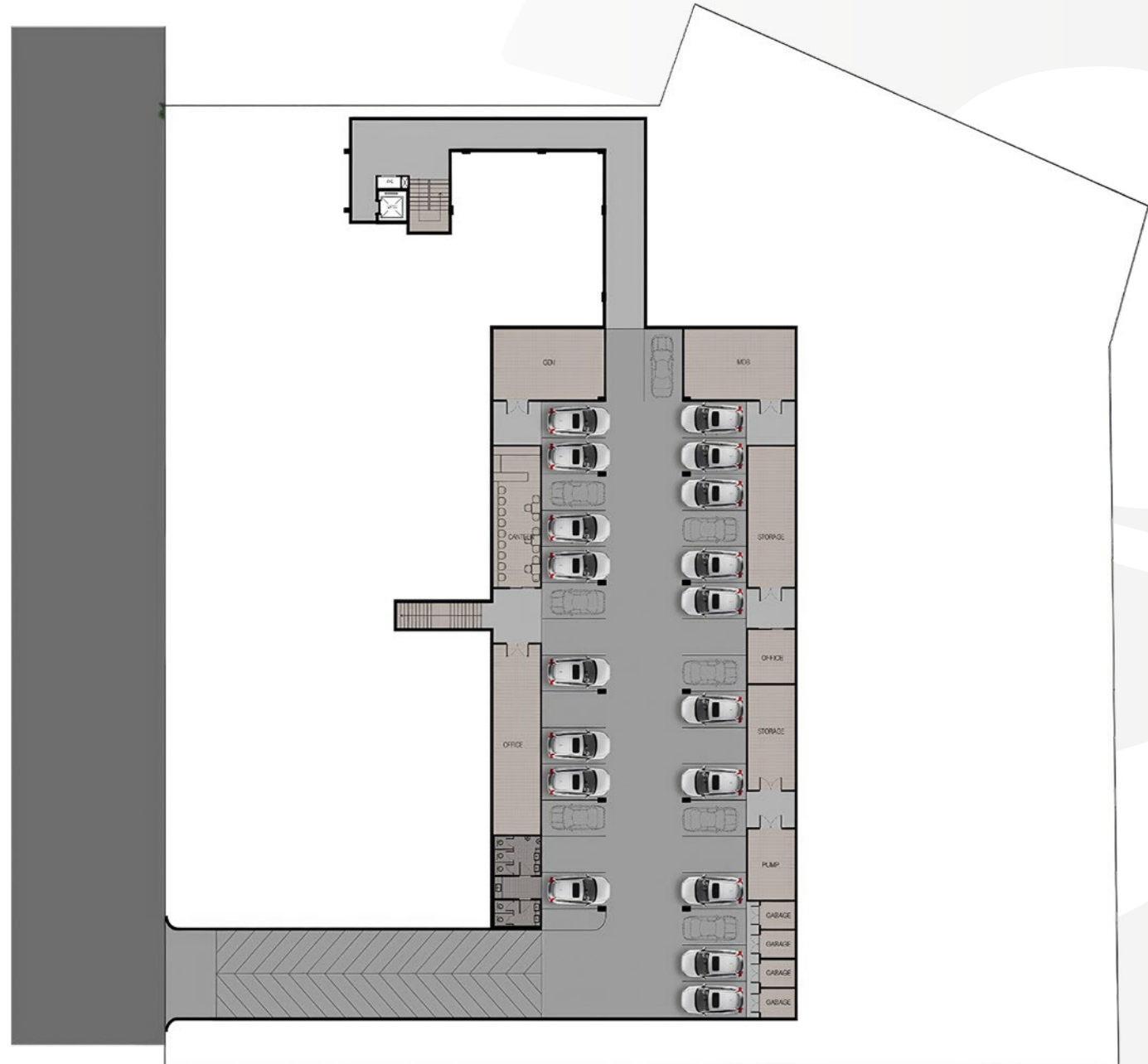
The unique concept of the project makes it a focal point for the entire Rawai area. Properties here have high rental potential regardless of the season. There are 35 premium villas and 2 condominiums in the complex.

Price from: **5,420,000 THB**

Total: **2,000,010,000 THB**

FLOOR PLAN

UNDERGROUND PARKING



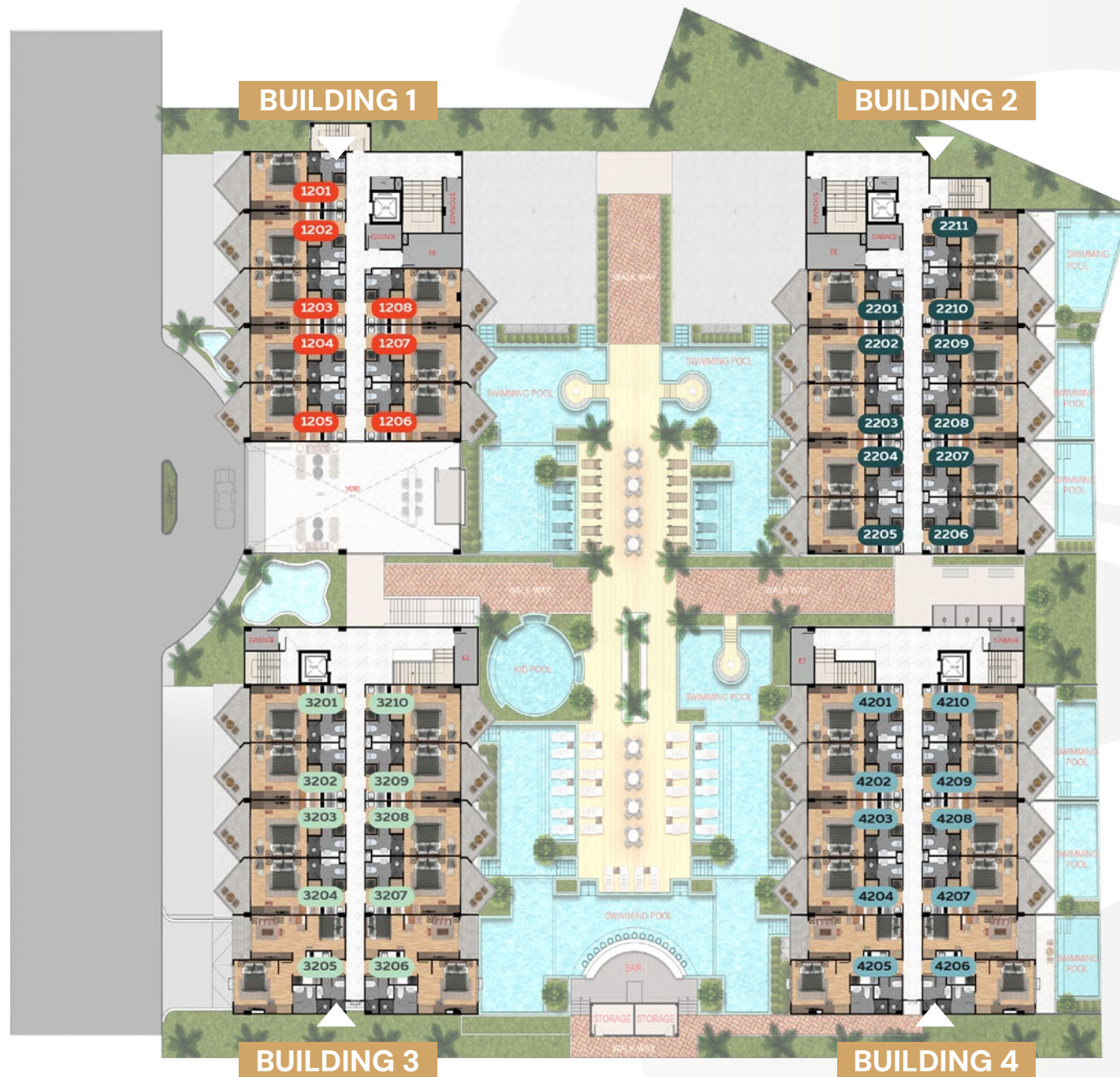
FLOOR PLAN

FLOOR 1



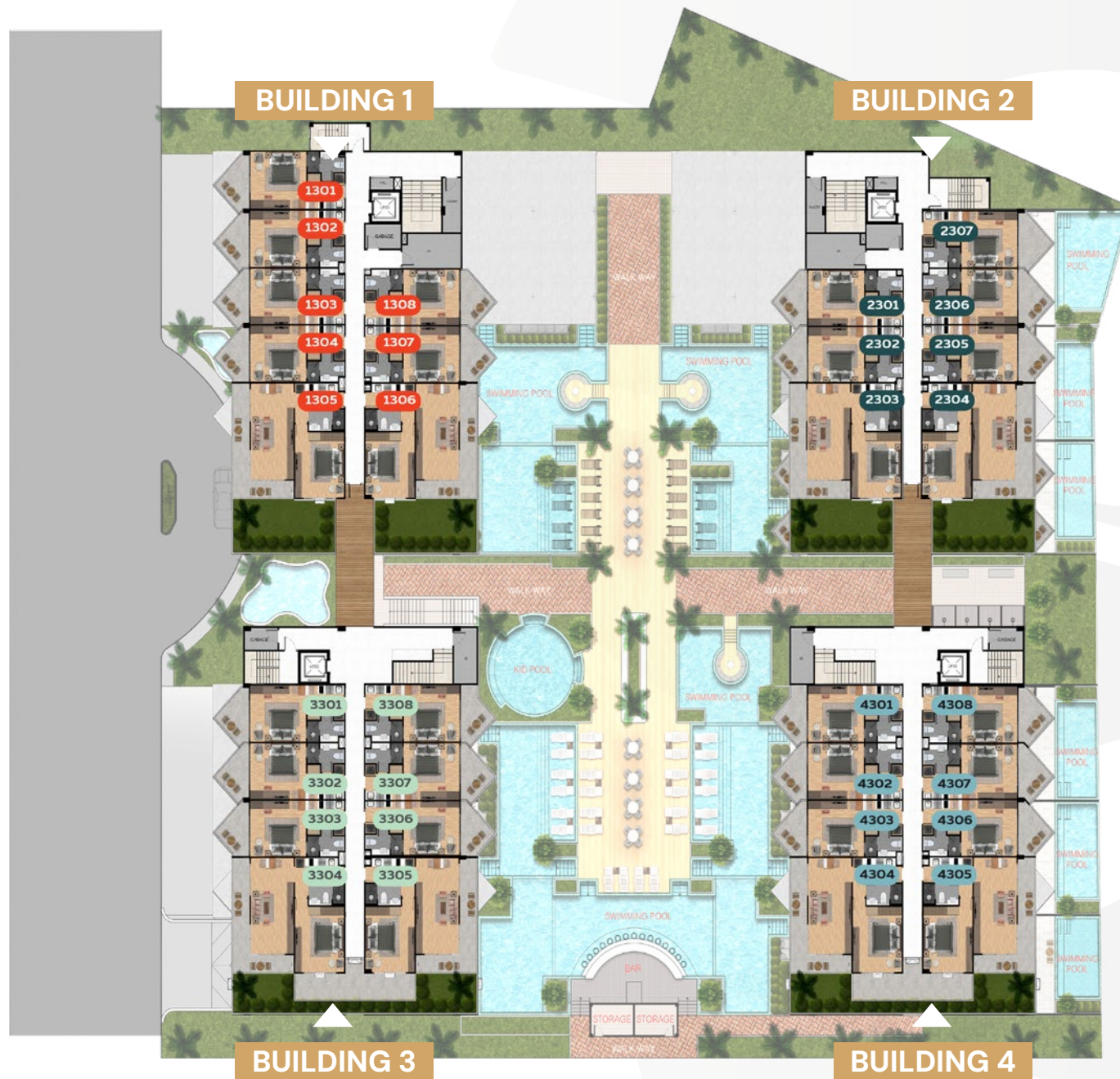
FLOOR PLAN

FLOOR 2



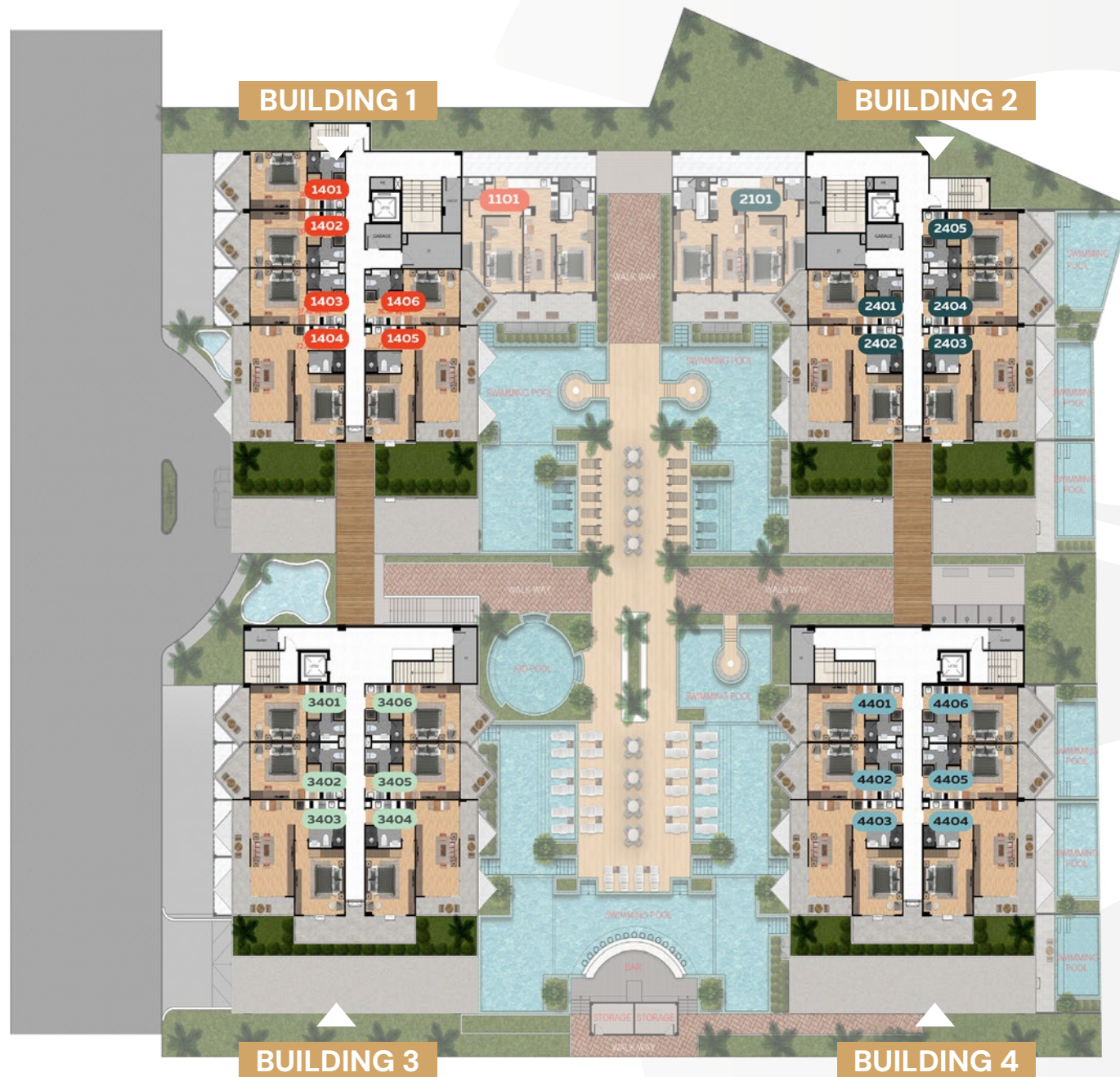
FLOOR PLAN

FLOOR 3



FLOOR PLAN

FLOOR 4



> AREA 37,6 SQ. M.

UNIT E - STUDIO



AREA 72.6 SQ. M.

UNIT F - 1 BEDROOM



AREA 62.4 SQ. M.

UNIT D - 2 BEDROOM



AREA 71.2 SQ. M.

UNIT A1 - 2 BEDROOM



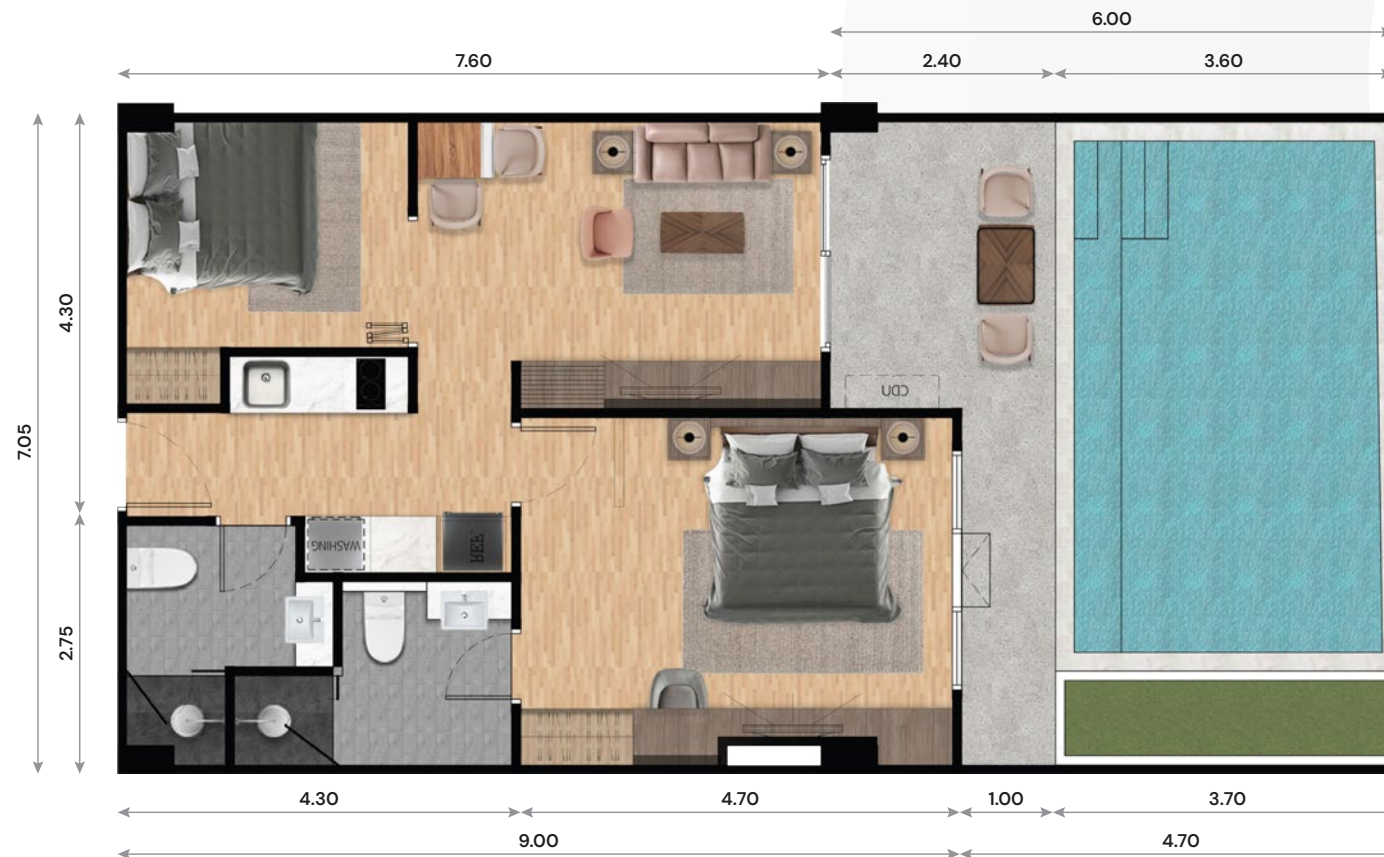
➤ AREA 97.2 SQ. M.

UNIT C - 3 BEDROOM



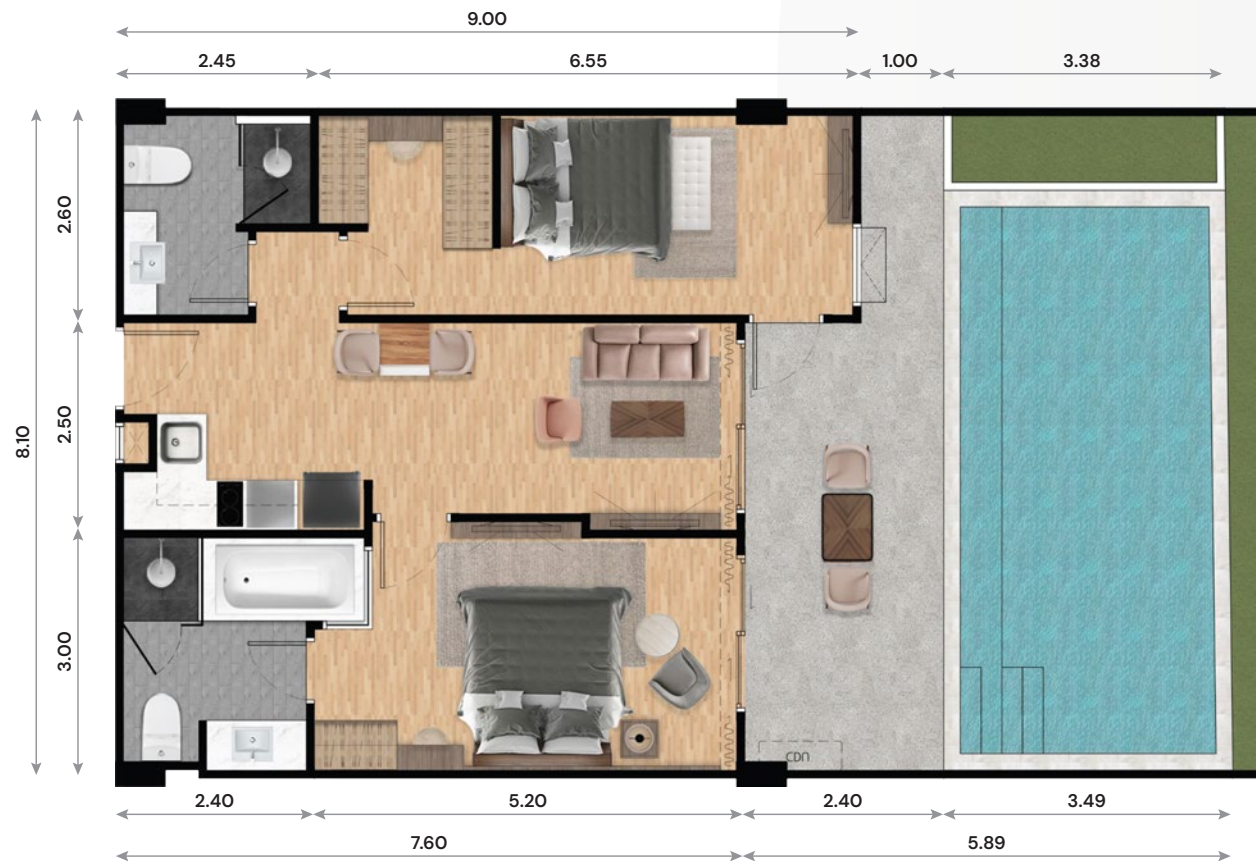
AREA 62.4 SQ. M.

UNIT D1 - 2 BEDROOM



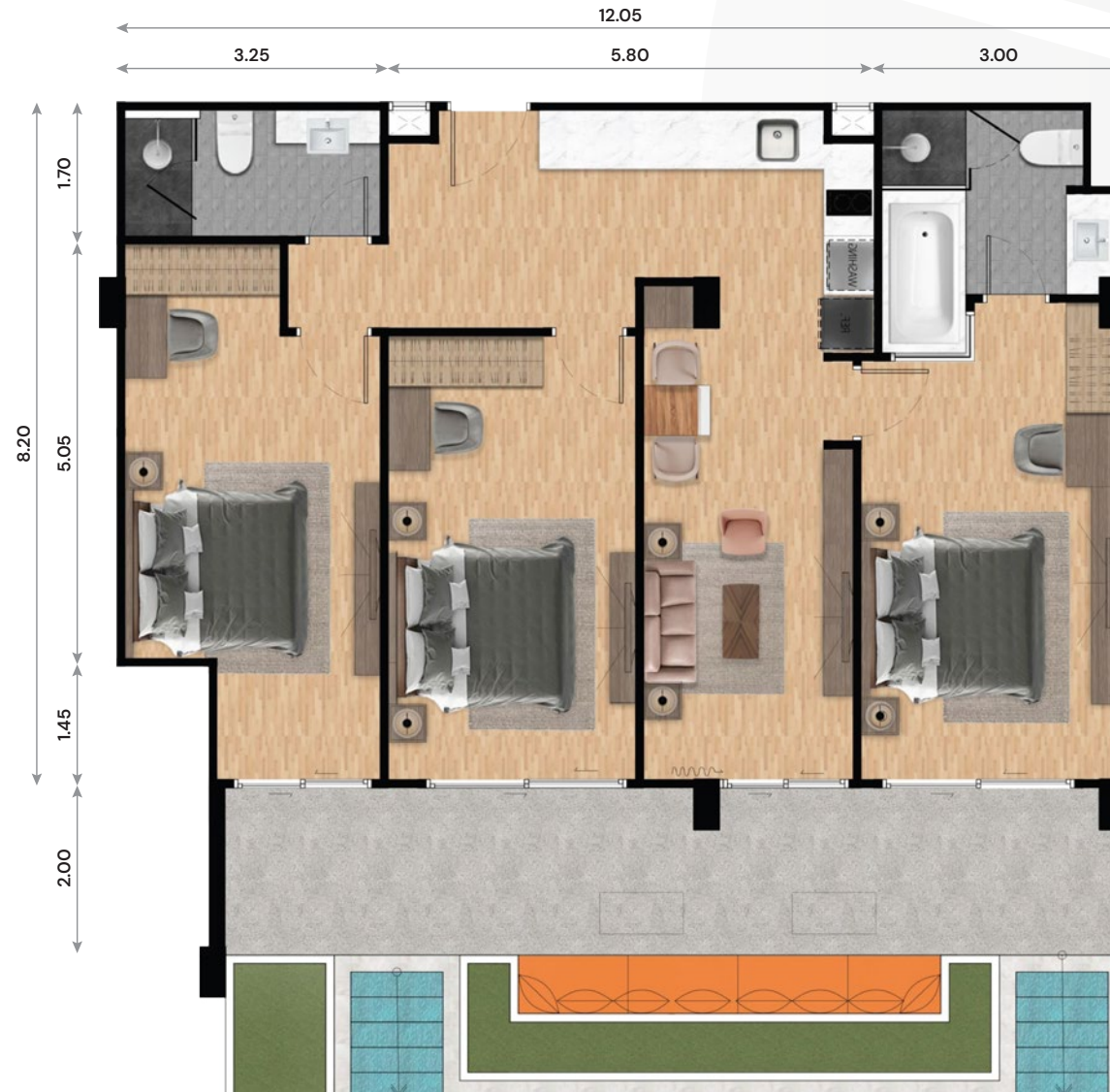
AREA 71 SQ. M.

UNIT A2 - 2 BEDROOM



➤ AREA 115.9 SQ. M.

UNIT B1 - 3 BEDROOM



AREA 119.2 SQ. M.

UNIT B - 3 BEDROOM



> RAWAYANA EAST VILLAS

The villas at **Rawayana East** are true luxury residences. In today's Phuket landscape, it is rare to find villas that offer such a unique combination of prime location, integrated infrastructure, professional management, and striking contemporary design.

In addition to the standard features such as private swimming pools and expansive living areas, each villa is equipped with a fully functional rooftop terrace — effectively adding an entire additional floor of usable space.



> ABOUT PROJECT

Whether you are acquiring a villa at **Rawayana East** for personal residence, holiday retreat, or as a high-yield investment asset, one defining factor remains — the truly remarkable impact of the surrounding infrastructure.

The entire Rawayana project was developed under the “city within a city” concept, effectively eliminating the need to leave the premises. Everything you might need — and more — is right here at your doorstep.



35 ULTRA PREMIUM
VILLAS



KIDS PARK



SHOPPING MALL



MEDICAL CLINIC



FOOD
SUPERMARKET



CONSTRUCTION
IN PROGRESS



INTERNATIONAL
SCHOOL



DISTANCE
TO THE BEACH 30 M.



INTERIOR OF THE VILLAS



LUXURY



SPACIOUS



MODERN



BEAUTIFUL

At Phuket9, we prioritize the interior design of our projects, carefully creating spaces that combine comfort with aesthetic allure. Our challenge lies in crafting interiors that cater to both short-term guests and long-term residents while maintaining the highest quality standards. We exclusively select premium finishing materials, adopt the latest trends in interior design, and incorporate sophisticated home technology. Our decor is thoughtfully selected to add a welcoming warmth and coziness. We deeply understand our guests' preferences, and it brings us joy to see them delighted by the spaces we design.





PREMIUM VILLAS COMPLEX

The unique concept of the project makes it a focal point for the entire Rawai area. Properties here have high rental potential regardless of the season. There are 35 premium villas in the complex.

Price from: **23,540,000 THB**

Total: **2,000,010,000 THB**

A 1ST FLOOR

FLOOR TOTAL AREA: 157.45 SQ. M.

TOTAL VILLA AREA: 295 SQ. M.



GARAGE:	24.70 SQ. M.
LIVING + DINING + KITCHEN:	41.00 SQ. M.
BEDROOM 1 + WC 1:	27.25 SQ. M.
TOILET:	3.80 SQ. M.
STORAGE, PUMP:	10.5 SQ. M.
TERRACE:	7.20 SQ. M.
SWIMMING POOL:	20.80 SQ. M.
POOL TERRACE:	22.20 SQ. M.

> A 2ND FLOOR

FLOOR TOTAL AREA: **96.55 SQ. M.**

TOTAL VILLA AREA: **295 SQ. M.**



BEDROOM 2 + BATHROOM:	30.00 SQ. M.
BEDROOM 3 + WC 2:	17.40 SQ. M.
CORRIDOR:	4.80 SQ. M.
BALCONY:	30.10 SQ. M.
STAIR:	14.25 SQ. M.

> A 3RD FLOOR

FLOOR TOTAL AREA: **40.65 SQ. M.**

TOTAL VILLA AREA: **295 SQ. M.**



ROOFTOP:

39.00 SQ. M.

STAIR:

1.65 SQ. M.

B 1ST FLOOR

FLOOR TOTAL AREA: **182.69 SQ. M.**

TOTAL VILLA AREA: **312 SQ. M.**



GARAGE:	21.80 SQ. M.
LIVING + DINING + KITCHEN:	46.50 SQ. M.
BEDROOM 1 + WC 1:	23.10 SQ. M.
TOILET:	3.96 SQ. M.
STORAGE, PUMP:	15.18 SQ. M.
SUB ENTRANCE:	2.38 SQ. M.
SWIMMING POOL:	33.30 SQ. M.
POOL TERRACE:	31.05 SQ. M.
STAIR:	6.60 SQ. M.

B 2ND FLOOR

FLOOR TOTAL AREA: **89.42 SQ. M.**

TOTAL VILLA AREA: **312 SQ. M.**



BEDROOM 2 + BATHROOM:

28.40 SQ. M.

BEDROOM 3 + WC 2:

24.10 SQ. M.

CORRIDOR:

12.51 SQ. M.

BALCONY:

15.38 SQ. M.

STAIR:

8.87 SQ. M.

> B 3RD FLOOR

FLOOR TOTAL AREA: **40 SQ. M.**

TOTAL VILLA AREA: **312 SQ. M.**



ROOFTOP:

30.40 SQ. M.

STAIR:

9.60 SQ. M.

C 1ST FLOOR

FLOOR TOTAL AREA: **171.50 SQ. M.**

TOTAL VILLA AREA: **339 SQ. M.**



GARAGE:	27.30 SQ. M.
LIVING + DINING + KITCHEN:	39.60 SQ. M.
BEDROOM 1 + WC 1:	32.50 SQ. M.
TOILET:	3.75 SQ. M.
STORAGE, PUMP:	6.90 SQ. M.
SUB ENTRANCE:	7.20 SQ. M.
SWIMMING POOL:	25.70 SQ. M.
POOL TERRACE:	28.55 SQ. M.

C 2ND FLOOR

FLOOR TOTAL AREA: **101.45 SQ. M.**

TOTAL VILLA AREA: **339 SQ. M.**

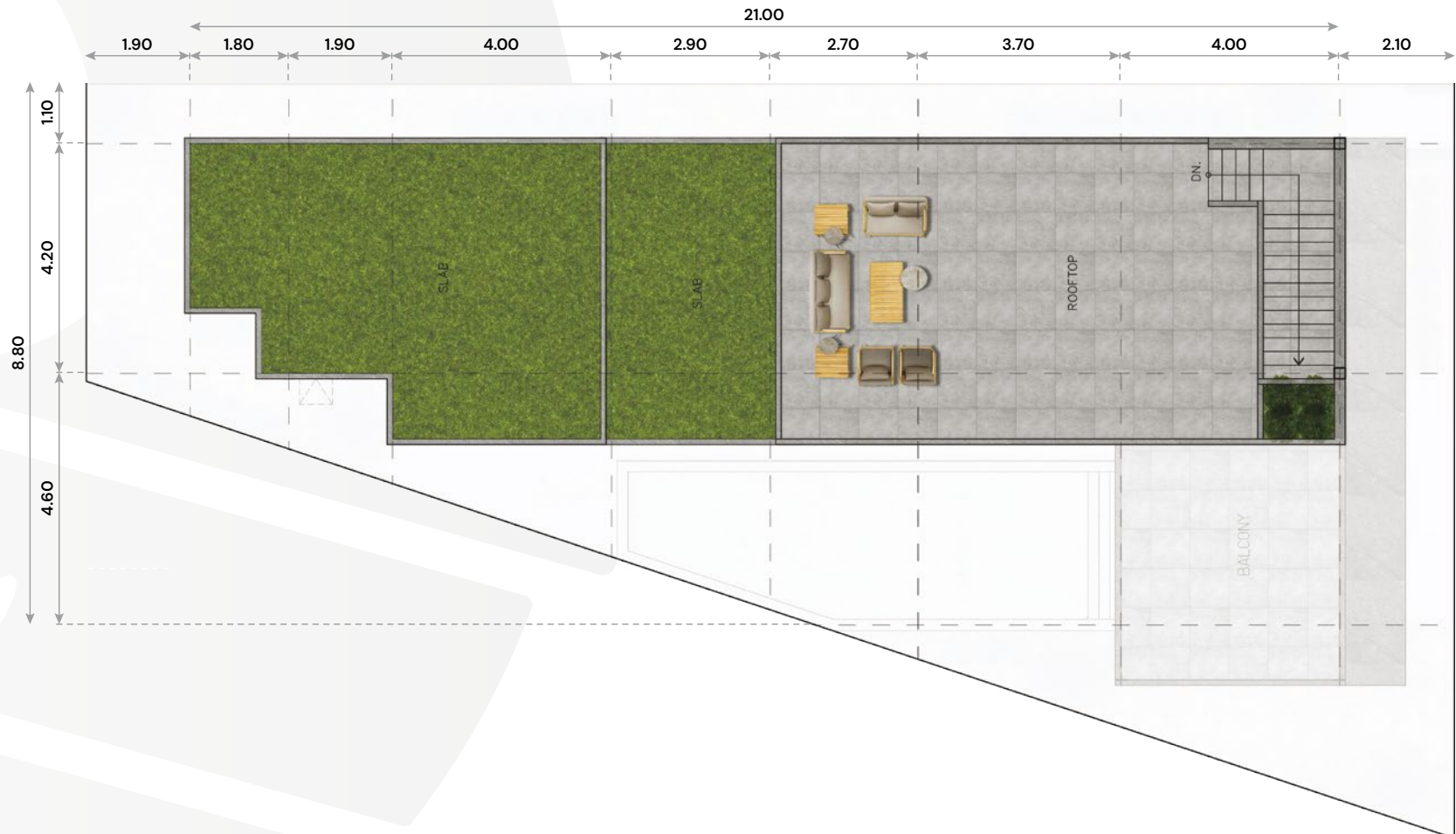


BEDROOM 2 + BATHROOM:	35.20 SQ. M.
CORRIDOR:	7.20 SQ. M.
BEDROOM 3 + WC 2:	21.60 SQ. M.
BALCONY:	31.10 SQ. M.
STAIR:	6.35 SQ. M.

> C 3RD FLOOR

FLOOR TOTAL AREA: **58.50 SQ. M.**

TOTAL VILLA AREA: **339 SQ. M.**



ROOFTOP: 50.60 SQ. M.

STAIR: 7.90 SQ. M.

D 1ST FLOOR

FLOOR TOTAL AREA: **205.85 SQ. M.**

TOTAL VILLA AREA: **382 SQ. M.**

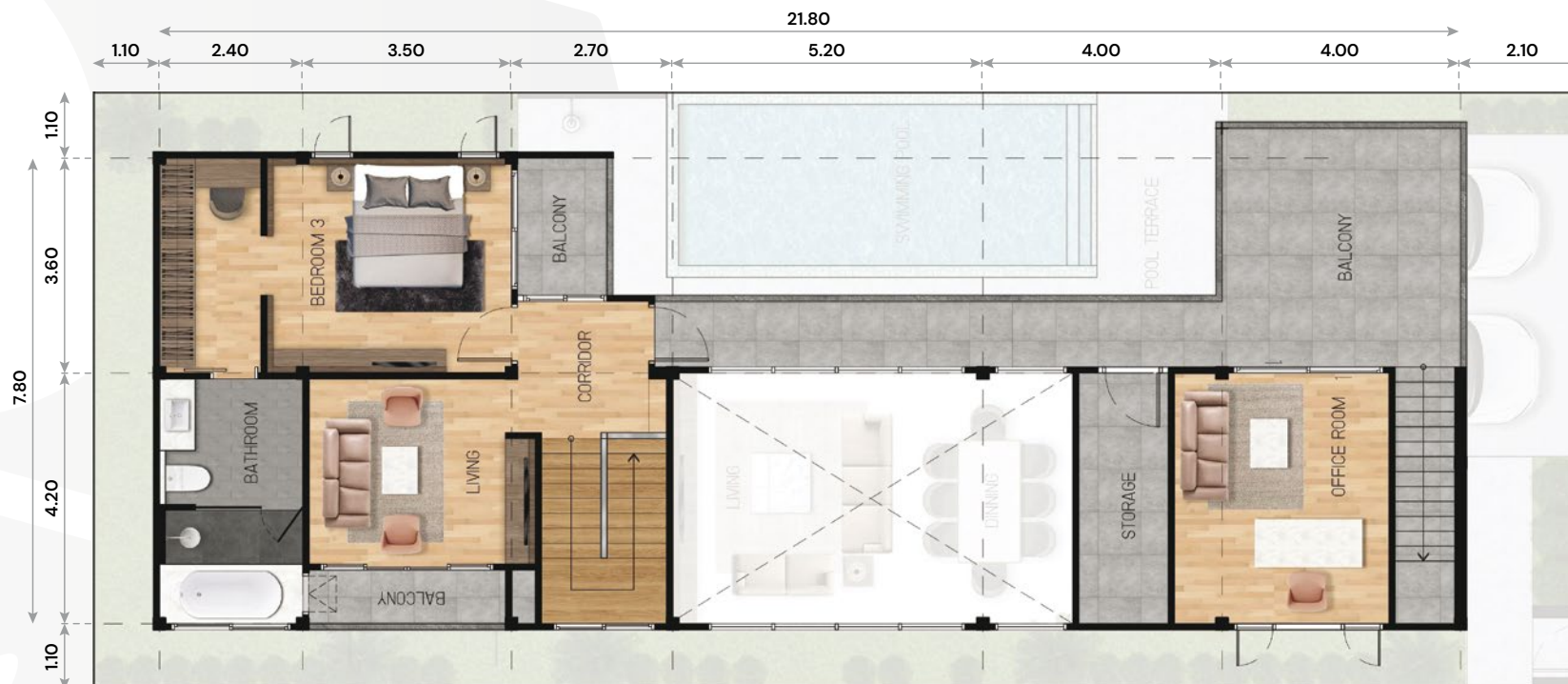


GARAGE:	33.20 SQ. M.
LIVING + DINING + KITCHEN:	41.05 SQ. M.
BEDROOM 1 + WC 1:	24.40 SQ. M.
BEDROOM 2 + WC 2:	23.00 SQ. M.
TOILET:	3.65 SQ. M.
STORAGE, PUMP:	11.85 SQ. M.
TERRACE:	5.60 SQ. M.
SWIMMING POOL:	22.35 SQ. M.
POOL TERRACE:	36.40 SQ. M.
STORAGE:	1.60 SQ. M.
STAIRS	2.50 SQ. M.

D 2ND FLOOR

FLOOR TOTAL AREA: **119.95 SQ. M.**

TOTAL VILLA AREA: **382 SQ. M.**



BEDROOM 3 + BATHROOM:

33.80 SQ. M.

LIVING + CORRIDOR:

18.20 SQ. M.

WORKING ROOM:

16.50 SQ. M.

STORAGE:

7.40 SQ. M.

BALCONY:

32.50 SQ. M.

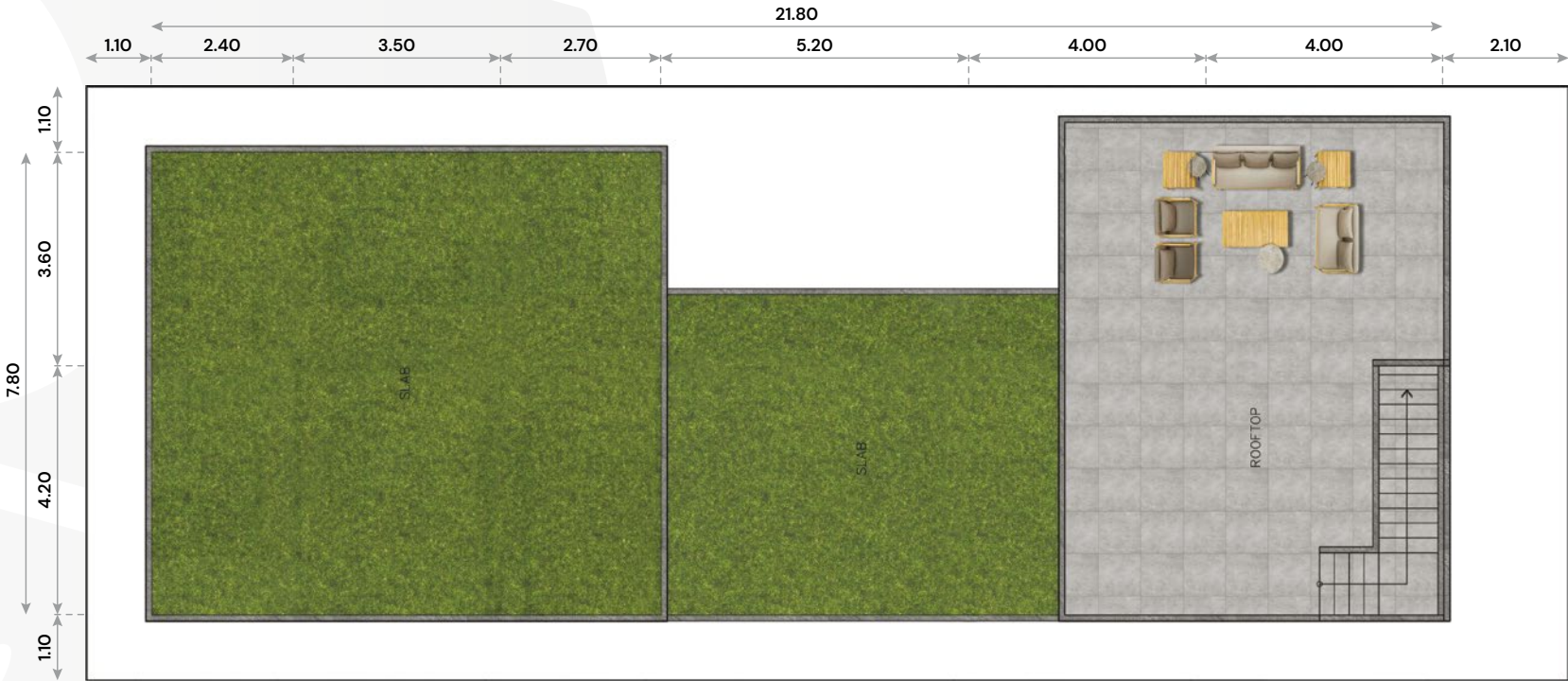
STAIR:

7.65 SQ. M.

> D 3RD FLOOR

FLOOR TOTAL AREA: 56.20 SQ. M.

TOTAL VILLA AREA: 382 SQ. M.

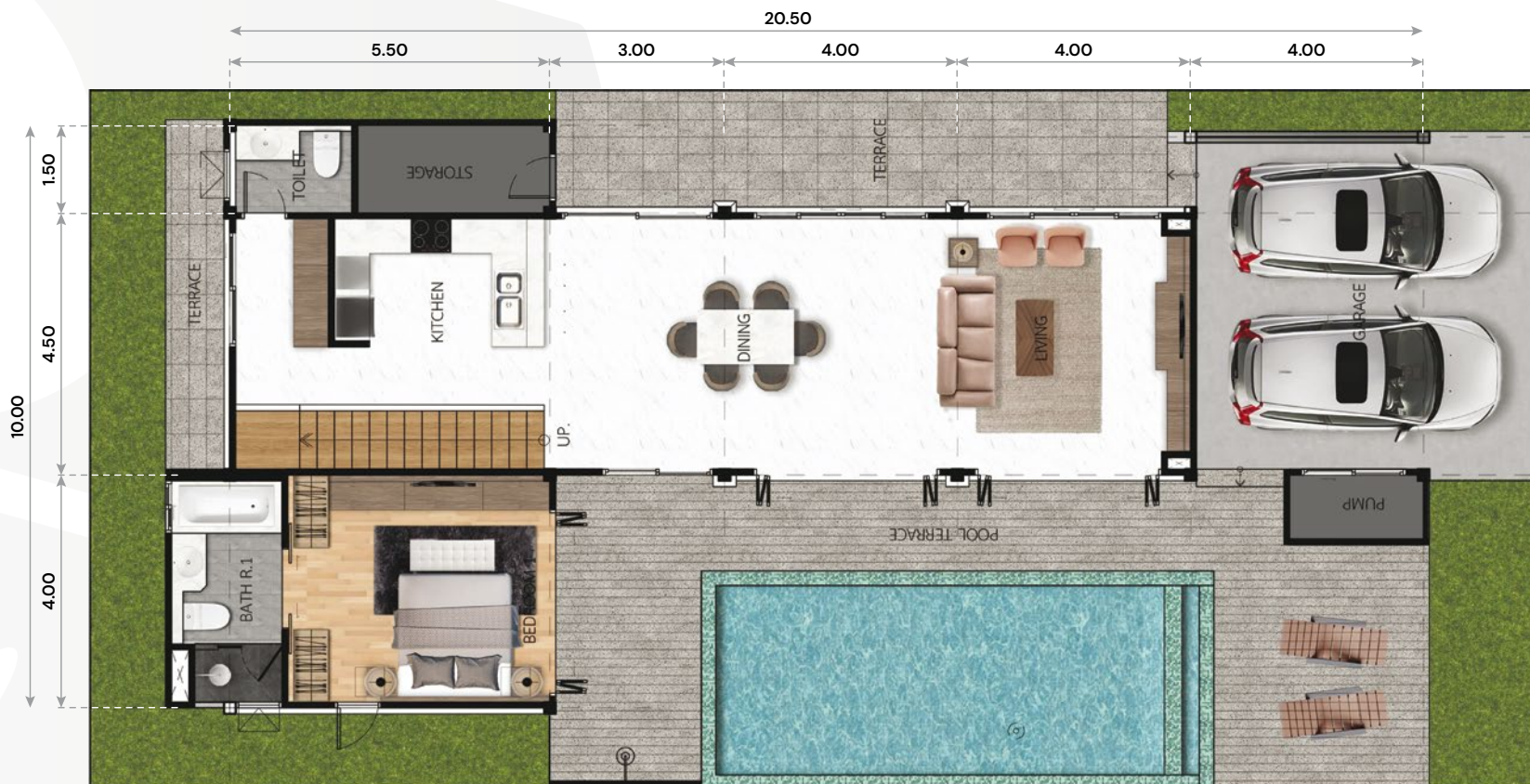


ROOFTOP: 49.80 SQ. M.
STAIR: 6.40 SQ. M.

E 1ST FLOOR

FLOOR TOTAL AREA: **251 SQ. M.**

TOTAL VILLA AREA: **406 SQ. M.**



GARAGE:	35.20 SQ. M.
LIVING + DINING + KITCHEN:	75.25 SQ. M.
BEDROOM 1 + WC 1:	21.20 SQ. M.
TOILET:	3.70 SQ. M.
STORAGE, PUMP:	8.90 SQ. M.
TERRACE:	29.20 SQ. M.
SWIMMING POOL:	33.00 SQ. M.
POOL TERRACE:	44.20 SQ. M.

E 2ND FLOOR

FLOOR TOTAL AREA: **155 SQ. M.**

TOTAL VILLA AREA: **406 SQ. M.**



BEDROOM 2 + BATHROOM:	18.60 SQ. M.
BEDROOM3 + BATHROOM:	27.20 SQ. M.
MASTER BEDROOM + BATHROOM:	38.30 SQ. M.
CORRIDOR:	10.15 SQ. M.
BALCONY:	60.90 SQ. M.

F 1ST FLOOR

FLOOR TOTAL AREA: **169.57 SQ. M.**

TOTAL VILLA AREA: **317 SQ. M.**



GARAGE:	22.80 SQ. M.
LIVING + DINING + KITCHEN:	44.65 SQ. M.
BEDROOM 1 + WC 1:	35.16 SQ. M.
TOILET:	4.46 SQ. M.
STORAGE, PUMP:	10.63 SQ. M.
TERRACE:	3.57 SQ. M.
SWIMMING POOL:	23.20 SQ. M.
POOL TERRACE:	25.10 SQ. M.

F 2ND FLOOR

FLOOR TOTAL AREA: **104.70 SQ. M.**

TOTAL VILLA AREA: **317 SQ. M.**



BEDROOM 2 + BATHROOM:	37.20 SQ. M.
BEDROOM3 + WC 1:	18.80 SQ. M.
CORRIDOR:	5.69 SQ. M.
BALCONY:	35.86 SQ. M.
STAIR:	7.15 SQ. M.

F 3RD FLOOR

FLOOR TOTAL AREA: **42.36 SQ. M.**

TOTAL VILLA AREA: **317 SQ. M.**



ROOF TOP:

35.34 SQ. M.

STAIR:

7.02 SQ. M.

G 1ST FLOOR

FLOOR TOTAL AREA: **155.90 SQ. M.**

TOTAL VILLA AREA: **289 SQ. M.**



GARAGE: **24.72 SQ. M.**
 LIVING + DINING + KITCHEN: **39.82 SQ. M.**
 BEDROOM 1 + WC 1: **27.25 SQ. M.**
 TOILET: **3.78 SQ. M.**

STORAGE, PUMP: **11.55 SQ. M.**
 TERRACE: **7.20 SQ. M.**
 SWIMMING POOL: **19.85 SQ. M.**
 POOL TERRACE: **21.75 SQ. M.**

G 2ND FLOOR

FLOOR TOTAL AREA: **89.71 SQ. M.**

TOTAL VILLA AREA: **289 SQ. M.**



BEDROOM 2 + BATHROOM:	30.20 SQ. M.
BEDROOM3 + WC 2:	17.38 SQ. M.
HALL:	4.76 SQ. M.
BALCONY:	29.70 SQ. M.
STAIR:	7.67 SQ. M.

G 3RD FLOOR

FLOOR TOTAL AREA: **43.13 SQ. M.**
TOTAL VILLA AREA: **289 SQ. M.**



ROOF TOP: **37.60 SQ. M.**
STAIR: **5.53 SQ. M.**

H 1ST FLOOR

FLOOR TOTAL AREA: **179.90 SQ. M.**

TOTAL VILLA AREA: **326 SQ. M.**



GARAGE: **25.70 SQ. M.**
 LIVING + DINING + KITCHEN: **41 SQ. M.**
 BEDROOM 1 + BATHROOM 1: **34.80 SQ. M.**
 TOILET: **3.50 SQ. M.**

STORAGE, PUMP: **13.35 SQ. M.**
 TERRACE: **3.80 SQ. M.**
 SWIMMING POOL: **20.75 SQ. M.**
 POOL TERRACE: **34.50 SQ. M.**

H 2ND FLOOR

FLOOR TOTAL AREA: **95.60 SQ. M.**

TOTAL VILLA AREA: **326 SQ. M.**



BEDROOM 2 + BATHROOM 2:	36.00 SQ. M.
BEDROOM 3 + WC 1:	22.00 SQ. M.
CORRIDOR:	5.15 SQ. M.
BALCONY:	25.20 SQ. M.
STAIR:	7.25 SQ. M.

H 3RD FLOOR

FLOOR TOTAL AREA: **50.50 SQ. M.**

TOTAL VILLA AREA: **326 SQ. M.**



ROOF TOP:

44.05 SQ. M.

STAIR:

6.45 SQ. M.

> 10 REASONS TO INVEST IN PHUKET PROPERTY

Phuket is one of the world's most popular tropical destinations, attracting over 13 million tourists annually.



HIGH OCCUPANCY RATES



NO BANK COMPLIANCE BARRIERS



STRONG CAPITAL GROWTH



GEOPOLITICAL NEUTRALITY



FREEHOLD OWNERSHIP FOR FOREIGNERS



SIMPLE EXIT STRATEGY



STABLE AND GROWING ECONOMY



PERSONAL USE



WORLD-CLASS INFRASTRUCTURE



TOURISM GROWTH



The company Phuket9 has been operating since 2004. Over the course of 20 years, the company's management has succeeded in scaling up from a small developer to the largest construction and management company on the island of Phuket. As of today, the company's assets include various enterprises with different structures and operational principles.

Each division of the company shares a common goal – to make the company's properties attractive to guests and ensure a regular return on investment. This approach enables the company to grow annually and expand its presence in the Phuket market. We are experts in forming a unified strategy for interdepartmental cooperation, creating new products while clearly understanding their future trajectory.





Phuket9

Rawayana

Nai Harn Beach

Phuket9.com

RAWAYANA

beachfront village

NEW PROJECT BY



 [phuket9develop](#)

 [phuket9](#)

[phuket9.com](#)